

Product datasheet for **AP33454PU-N**

RET Chicken Polyclonal Antibody

Product data:

Product Type:	Primary Antibodies
Applications:	ELISA, IF, WB
Recommended Dilution:	ELISA: 1/80000-1/120000. Western blot: 1/5000-1/10000. Immunofluorescence: 1/250-1/500.
Reactivity:	Human
Host:	Chicken
Isotype:	IgY
Clonality:	Polyclonal
Immunogen:	Recombinant His-tagged extracellular fragment of human RET protein produced using CHO-based. The extracellular fragment of hRET was expressed and secreted to the cell culture supernatant. Protein was purified by Ni-affinity chromatography following gel-filtration from cell culture supernatant.
Specificity:	This antibody detects Human RET. Other species not tested.
Formulation:	Concentrated Ammonium Sulphate in PBS pH 7.4 State: Aff - Purified State: Liquid purified IgY fraction
Concentration:	lot specific
Purification:	Affinity Chromatography
Conjugation:	Unconjugated
Storage:	Upon receipt, store at 2-8°C. As product is (NH ₄) ₂ SO ₄ precipitate, mix well by pipetting or vortexing prior use.
Stability:	Shelf life: One year from despatch.
Gene Name:	ret proto-oncogene



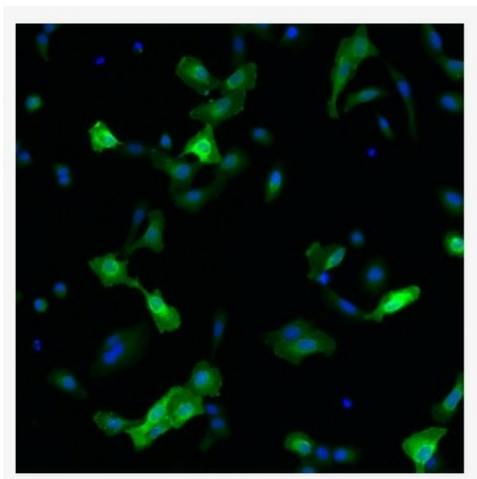
[View online »](#)

Database Link: [Entrez Gene 5979 Human P07949](#)

Background: The RET proto-oncogene is a receptor tyrosine kinase for members of the glial cell line-derived neurotrophic factor family of extracellular signalling molecules

Synonyms: C-ret, CDHF12

Product images:



Immunofluorescence detection of human RET expressed in U2OS cells. RET was visualized using Chicken polyclonal antibody to human RET (dilution 1:500) and Goat anti-chicken IgY - H&L DyLight 550. For nuclear staining DAPI was used. ArrayScan VTI platform (Thermo Scientific) was used for image acquisition (10x objective). Composite picture was generated using pseudocolors green for RET specific signal and blue for nuclei.