

Product datasheet for **AP33453PU-N**

ARMET (MANF) Rabbit Polyclonal Antibody

Product data:

Product Type:	Primary Antibodies
Applications:	ELISA, WB
Recommended Dilution:	ELISA: 1/200000. Western Blot: 1/2000-1/6000.
Reactivity:	Human
Host:	Rabbit
Isotype:	IgG
Clonality:	Polyclonal
Immunogen:	Recombinant Human MANF produced using CHO-based. Antigen is purified from cell culture supernatant.
Specificity:	Recognizes Human MANF. No cross-reactivity in MANF-knockout Mouse.
Formulation:	Concentrated Ammonium Sulphate in PBS pH 7.4 State: Aff - Purified State: Liquid purified IgG fraction
Concentration:	lot specific
Purification:	Affinity Chromatography on Protein G
Conjugation:	Unconjugated
Storage:	Upon receipt, store at 2-8°C. As product is (NH ₄) ₂ SO ₄ precipitate, mix well by pipetting or vortexing prior use.
Stability:	Shelf life: one year from despatch.
Gene Name:	mesencephalic astrocyte derived neurotrophic factor
Database Link:	Entrez Gene 7873 Human P55145



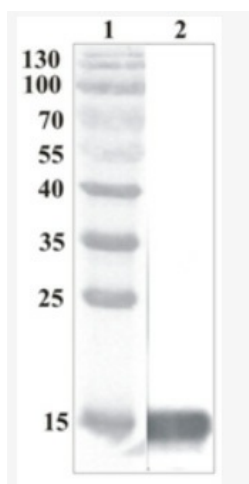
[View online »](#)

Background:

MANF is a trophic factor for midbrain dopamine neurons *in vivo*. It prevents the 6-OHDA-induced degeneration of dopamine neurons in rodent models of Parkinson's disease (Lindholm et al., 2008, Voutilainen et al., 2009). When administered after 6-OHDA-lesioning it restores the dopaminergic function and prevents degeneration of dopamine neurons in substantia nigra pars compacta.

Synonyms:

Arginine-rich protein, MANF

Product images:

WesternBlot testing of anti-MANF polyclonal antibody. Lane 1: PageRuler Prestained Protein Ladder ; Lane 2: Purifiedrecombinant MANF (1 ug per line) expressed using CHOEBNALT85 cell line.