

Product datasheet for **AP33452PU-N**

ARMETL1 (CDNF) Rabbit Polyclonal Antibody

Product data:

Product Type:	Primary Antibodies
Applications:	ELISA, IF, IHC, WB
Recommended Dilution:	ELISA: 1/5000-1/10000. Western Blot: 1/5000-1/10000. Immunofluorescence: 1/500-1/3000. Immunohistochemistry on Paraffin Sections: 1/100-1/200. Formalin-fixed, paraffin-embedded tissues requires antigen retrieval.
Reactivity:	Human, Mouse
Host:	Rabbit
Isotype:	IgG
Clonality:	Polyclonal
Immunogen:	Recombinant Human CDNF produced using CHO-based. Antigen is purified from cell culture supernatant.
Specificity:	Recognizes Human and Mouse CDNF. Other species not tested.
Formulation:	50% Saturated Ammonium Sulphate in PBS pH 7.4 State: Aff - Purified State: Liquid purified IgG fraction
Concentration:	lot specific
Purification:	Affinity Chromatography on Protein G
Conjugation:	Unconjugated
Storage:	Upon receipt, store at 2-8°C. As product is (NH ₄) ₂ SO ₄ precipitate, mix well by pipetting or vortexing prior use.
Stability:	Shelf life: one year from despatch.
Gene Name:	cerebral dopamine neurotrophic factor
Database Link:	Entrez Gene 441549 Human Q49AH0



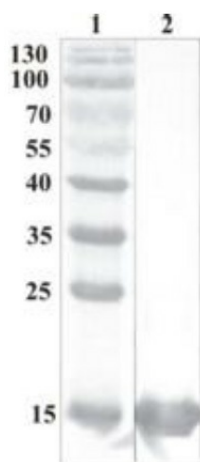
[View online »](#)

Background:

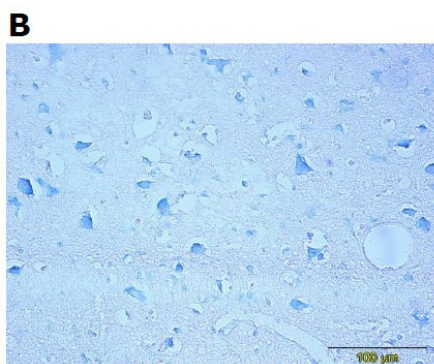
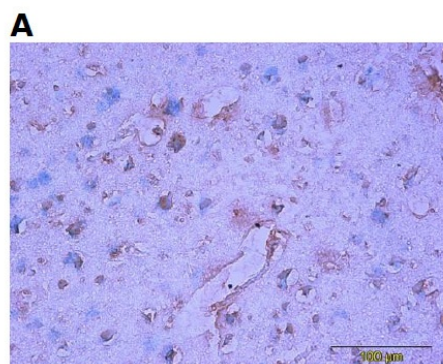
CDNF is a trophic factor for midbrain dopamine neurons *in vivo*. It prevents the 6-OHDA- (Lindholm et al. 20007; Voutilainen et al., 2011) and MPTP-induced degeneration (Airavaara et al., 2012) of dopamine neurons in rodent models of Parkinson's disease. When administered after 6-OHDA or MPTP -lesioning it restores the dopaminergic function and prevents degeneration of dopamine neurons in substantia nigra pars compacta.

Synonyms:

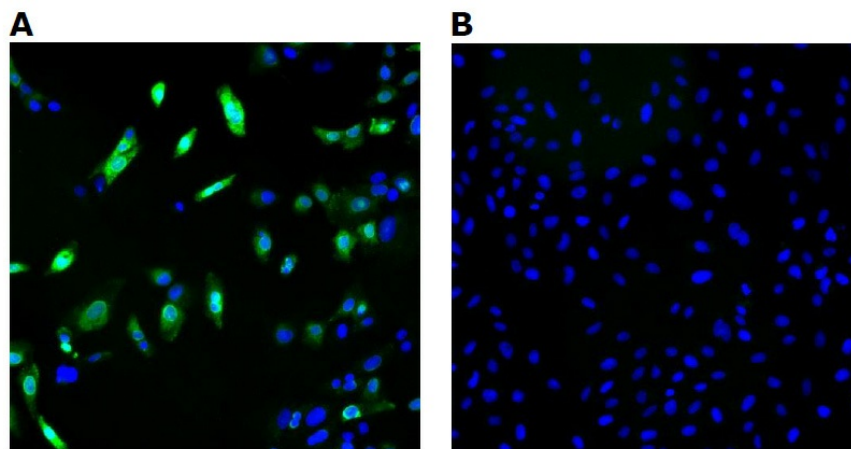
ARMET-like protein 1, ARMETL1

Product images:

Western Blot testing of anti-CDNF polyclonal antibody. Lane 1. PageRuler Prestained Protein Ladder ; Lane 2. Recombinant CDNF expressed into the supernatant of CHO cell culture medium.



Immunohistochemistry testing of anti-CDNF Rabbit polyclonal antibody. Analysis was performed using formalin-fixed paraffin-embedded human cerebral cortex tissue sections from Alzheimer's disease patients. Tissue sections were boiled with sodium citrate buffer (pH 6) for antigen retrieval. Incubation with primary antibody at 5 ug/ml was performed overnight at 4°C. DAKO EnVision™ Detection System, Peroxidase/DAB was used for visualization. Sections were counterstained with toluidine blue and mounted with Eukitt mounting medium. A. CDNF staining by rabbit polyclonal anti-CDNF antibody; B. Negative staining without primary antibody.



Immunofluorescence detection of human CDNF expressed in U2OS cells. CDNF was visualized using anti-CDNF rabbit polyclonal antibody, dilution 1:3000. Goat anti-rabbit AlexaFluor488 was used as secondary antibody. For nuclear staining DAPI was used. ArrayScan VTI platform (Thermo Scientific) was used for image acquisition (10x objective). Composite picture was generated using pseudocolors green for CDNF specific signal and blue for nuclei. A. CDNF-expressing U2OS cells; B. Negative control (non-transfected U2OS cells).