

Product datasheet for **AP33450PU-N**

GFP Rabbit Polyclonal Antibody

Product data:

Product Type:	Primary Antibodies
Applications:	WB
Recommended Dilution:	Western blot: 1-2 µg/ml.
Host:	Rabbit
Isotype:	IgG
Clonality:	Polyclonal
Immunogen:	Recombinant GFP protein. The anti-GFP antibody was generated by immunization of rabbits with highly purified recombinant GFP protein produced in E. coli.
Specificity:	The antibody was made against GFP from the jellyfish Aequorea Victoria using the whole native protein as an antigen.
Formulation:	PBS, pH 7.4, without preservatives State: Aff - Purified State: Lyophilized purified IgG fraction
Reconstitution Method:	Restore in sterile water to a concentration of 0.1-1.0 mg/ml.
Purification:	Affinity Chromatography on Protein A
Conjugation:	Unconjugated
Storage:	Store lyophilized at 2-8°C for 6 months or at -20°C long term. After reconstitution store the antibody undiluted at 2-8°C for one month or (in aliquots) at -20°C long term. Avoid repeated freezing and thawing.
Stability:	Shelf life: one year from despatch.
Database Link:	<u>P42212</u>



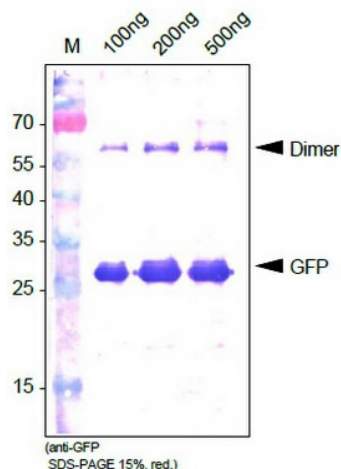
[View online »](#)

Background:

Green Fluorescent Protein (GFP) has quickly become a powerful research tool for assessing gene expression and subcellular protein distribution in fixed or living cells. GFP is excited by and brightly fluoresces when exposed to UV or blue light. This feature makes it ideal as a marker for use in fluorescence microscopy, cytometry, tagging fusion proteins, and assaying transcriptional regulation from gene promoters in vivo. Numerous GFP variants with enhanced and shifted emission spectra (blue, green, and yellow) have been developed through amino acid substitutions at specific residues.

Synonyms:

Green fluorescent protein, GFP-Tag

Product images:


Western analysis of recombinant GFP-His protein using a rabbit polyclonal anti-GFP antibody CAT.-NoAP33450PU-N