

Product datasheet for **AP33447PU-N**

MLV p30 Gag protein Rabbit Polyclonal Antibody

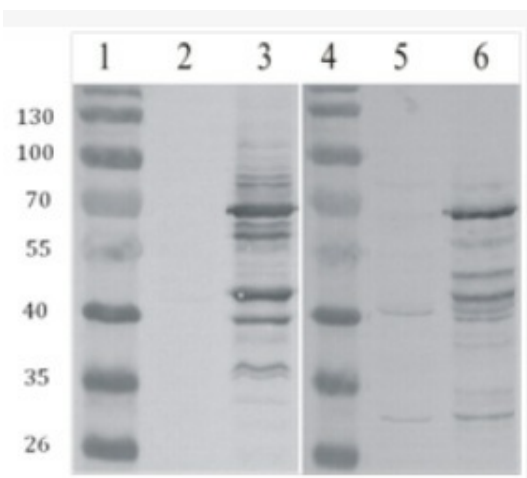
Product data:

Product Type:	Primary Antibodies
Applications:	ELISA, WB
Recommended Dilution:	Western blot: 0.5-1 µg/ml (reduced conditions). ELISA (1/250 000 as Titer). 0.03-0.1 ug/ml recommended for Indirect ELISA.
Reactivity:	Mouse
Host:	Rabbit
Isotype:	IgG
Clonality:	Polyclonal
Immunogen:	Full length Recombinant MLV-Gag p30 capsid protein protein, purified from <i>E. coli</i>
Specificity:	This antibody detects MLV p30 Gag protein.
Formulation:	Concentrated Ammonium Sulphate in PBS pH 7.4 State: Aff - Purified State: Liquid purified Ig fraction
Concentration:	lot specific
Purification:	Immunoaffinity Chromatography
Conjugation:	Unconjugated
Storage:	Store undiluted at 2-8°C. DO NOT FREEZE!
Stability:	Shelf life: one year from despatch.
Background:	Murine leukemia viruses belong to family of Retroviruses group and are named for their ability to cause cancer in mice. Some form of MLV's are used in cancer research. The retroviral Gag protein plays important roles at several stages in the viral life cycle. Late in infection, the Gag precursor protein acts to mediate the assembly and release of virion particles. After budding, the core matures by cleavage of Gag precursor protein into the mature core proteins, the matrix (MA), capsid (CA) and nucleocapsid proteins. These separated Gag proteins then play roles in the early stages of infection.
Synonyms:	Murine Leukemia Virus p30 protein, MLV-Gag p30



[View online »](#)

Product images:



Western blot testing of MLV-gag antibody. Line 1. PageRuler Prestained Protein Ladder (#[SM0671], lot: 00052778, Fermentas); Line 2. HEK293 cells; Line 3. MLV-gag protein expressed in HEK293 cells; Line 4. PageRuler Prestained Protein Ladder (#[SM0671], lot: 0