

## Product datasheet for **AP33414PU-N**

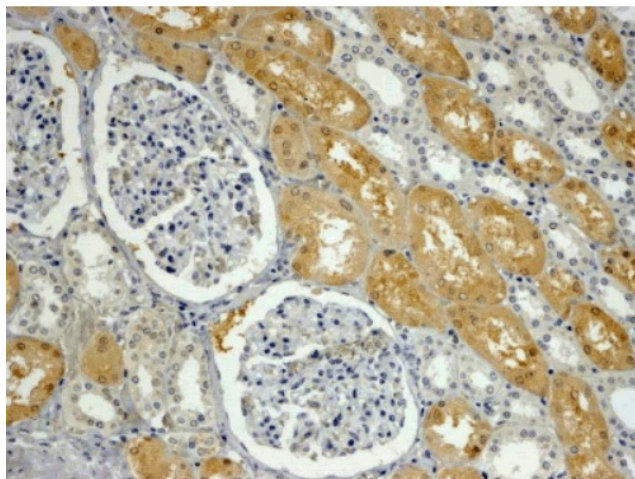
### APXL (SHROOM2) (C-term) Goat Polyclonal Antibody

#### Product data:

Product Type:	Primary Antibodies
Applications:	ELISA, IHC
Recommended Dilution:	<b>Peptide ELISA:</b> 1/32000 (Detection Limit). <b>Immunohistochemistry on Paraffin Sections:</b> 4-6 µg/ml. In paraffin embedded Human Kidney shows cytoplasm staining in PCT exclusively.
Reactivity:	Bovine, Human
Host:	Goat
Clonality:	Polyclonal
Immunogen:	Peptide with sequence from the C-Terminus of the protein sequence according to NP_001640.
Specificity:	This antibody recognizes APXL.
Formulation:	Tris saline, pH~7.3 State: Aff - Purified State: Liquid purified Ig fraction Stabilizer: 0.5% BSA Preservative: 0.02% Sodium Azide
Concentration:	lot specific
Purification:	Ammonium Sulphate Precipitation followed by Antigen Affinity Chromatography using the immunizing peptide
Conjugation:	Unconjugated
Storage:	Store undiluted at 2-8°C for one month or (in aliquots) at -20°C for longer. Avoid repeated freezing and thawing.
Stability:	Shelf life: one year from despatch.
Gene Name:	shroom family member 2
Database Link:	<a href="#">Entrez Gene 357 Human Q13796</a>
Synonyms:	APXL; DKFZp781J074; FLJ39277; HSAPXL



[View online »](#)

**Product images:**

(4ug/ml) staining of paraffin embedded Human Kidney. Steamed antigen retrieval with Tris/EDTA buffer pH 9, HRP-staining.