

## Product datasheet for **AP33410PU-N**

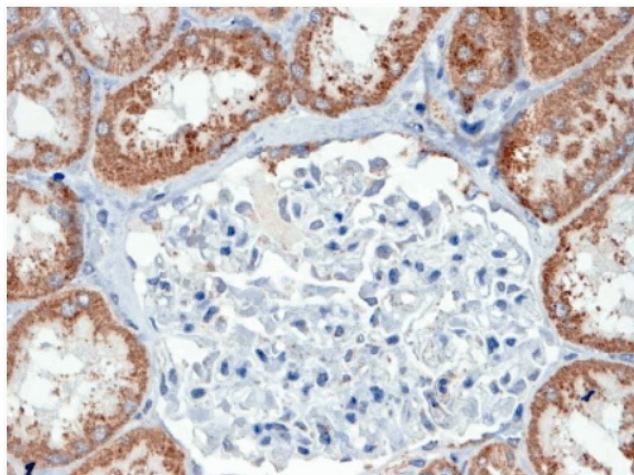
### USP16 Goat Polyclonal Antibody

#### Product data:

Product Type:	Primary Antibodies
Applications:	ELISA, IHC
Recommended Dilution:	<b>Peptide ELISA:</b> 1/3200. <b>Immunohistochemistry on Paraffin Sections:</b> 4-6 µg/ml. In paraffin embedded Human Kidney shows textured cytoplasm staining in the convoluted tubules.
Reactivity:	Bovine, Canine, Human, Mouse, Porcine, Rat
Host:	Goat
Clonality:	Polyclonal
Immunogen:	Peptide with sequence GKKRTKGKTVPIDD-C, from the N-Terminus of the protein sequence according to NP_006438.1; NP_001001992.1.
Specificity:	This antibody is expected to recognize Isoform a (NP_006438.1) and Isoform b (NP_001001992.1). Reported variants represent identical protein (NP_006438.1; NP_001027582.1).
Formulation:	Tris saline, pH~7.3 State: Aff - Purified State: Liquid purified Ig fraction Stabilizer: 0.5% BSA Preservative: 0.02% Sodium Azide
Concentration:	lot specific
Purification:	Affinity Chromatography
Conjugation:	Unconjugated
Storage:	Store undiluted at 2-8°C for one month or (in aliquots) at -20°C for longer. Avoid repeated freezing and thawing.
Stability:	Shelf life: one year from despatch.
Gene Name:	ubiquitin specific peptidase 16
Database Link:	<a href="#">Entrez Gene 10600 Human Q9Y5T5</a>
Synonyms:	Ubiquitin carboxyl-terminal hydrolase 16, MSTP039



[View online »](#)

**Product images:**

(4ug/ml) staining of paraffin embedded Human Human Kidney. Steamed antigen retrieval with Tris/EDTA buffer pH 9, HRP-staining.