

Product datasheet for **AP33404PU-N**

ESE1 (ELF3) (1-16) Rabbit Polyclonal Antibody

Product data:

Product Type:	Primary Antibodies
Applications:	ELISA, IHC, WB
Recommended Dilution:	ELISA. Immunohistochemistry on Paraffin Sections: 5 µg/ml. Western Blot: 1/500 - 1/1000.
Reactivity:	Human, Monkey
Host:	Rabbit
Isotype:	IgG
Clonality:	Polyclonal
Immunogen:	Synthetic peptide from human ELF3 (aa 1-16)
Specificity:	Detects N-terminal sequence MAATCEISNIFSNYFS and the C-terminal sequence SSGWKEEEVLQSRN of the Human ESE-1 protein.
Formulation:	PBS State: Aff - Purified State: Liquid purified IgG fraction Preservative: 0.02% Sodium Azide
Concentration:	lot specific
Purification:	Immunoaffinity Chromatography
Conjugation:	Unconjugated
Storage:	Store undiluted at 2-8°C for one month or (in aliquots) at -20°C for longer. Avoid repeated freezing and thawing.
Stability:	Shelf life: one year from despatch.
Gene Name:	E74 like ETS transcription factor 3
Database Link:	Entrez Gene 1999 Human P78545



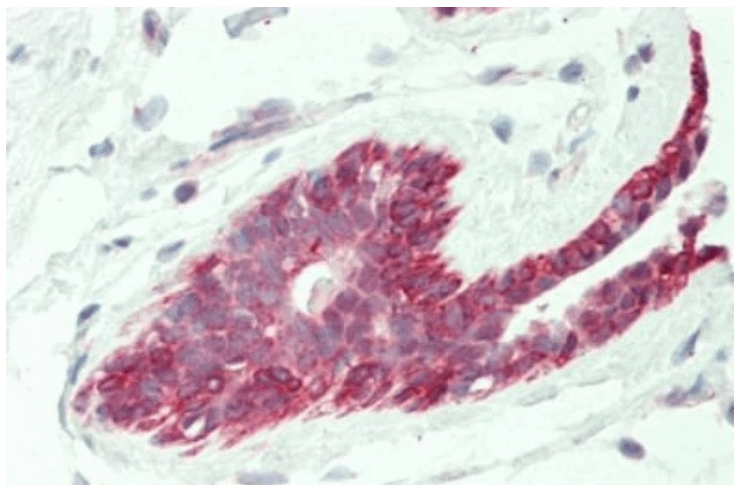
[View online »](#)

Background:

ESE1 (Epithelium-Specific Ets) is a novel, highly tissue-restricted member of the ets transcription factor/oncogene family, which has features distinct from those of any other ets-related factor. ESE1 binds with high affinity to and transactivates the ets binding site in the promoter of the keratinocyte terminal differentiation marker gene, SPRR2A. ESE1 is a critical regulator of epithelial cell differentiation.

Synonyms:

Elf-3, ESX, ERT, JEN

Product images:

Human Breast: Formalin-Fixed, Paraffin-Embedded (FFPE)