

## Product datasheet for **AP33395PU-M**

### GnRH (GNRH1) (11-60) Rabbit Polyclonal Antibody

#### Product data:

Product Type:	Primary Antibodies
Applications:	IHC, WB
Recommended Dilution:	<b>Western blot:</b> 1/500-1/1000. <b>Immunohistochemistry on Paraffin Sections:</b> 1/50-1/200.
Reactivity:	Human, Mouse, Rat
Host:	Rabbit
Clonality:	Polyclonal
Immunogen:	Synthetic peptide corresponding to amino acids 11-60 of Human GnRH I.
Specificity:	This antibody detects endogenous levels of GnRH 1 protein.
Formulation:	PBS, pH 7.2 State: Aff - Purified State: Liquid purified Ig fraction (> 95% by SDS-PAGE) Preservative: 0.05% Sodium Azide
Concentration:	1.0 mg/ml
Purification:	Affinity Chromatography using epitope-specific immunogen
Conjugation:	Unconjugated
Storage:	Store undiluted at 2-8°C for one month or (in aliquots) at -20°C for longer. Avoid repeated freezing and thawing.
Stability:	Shelf life: one year from despatch.
Predicted Protein Size:	~ 11 kDa
Gene Name:	gonadotropin releasing hormone 1
Database Link:	<a href="#">Entrez Gene 2796 Human P01148</a>



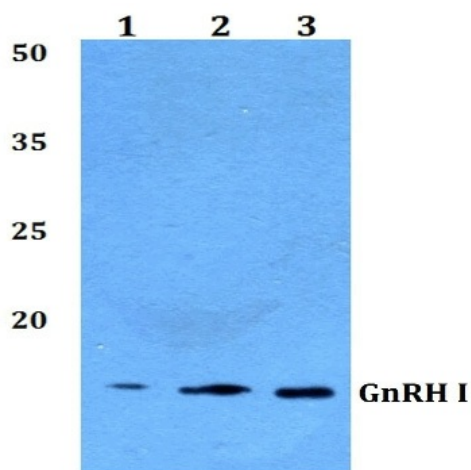
[View online »](#)

**Background:**

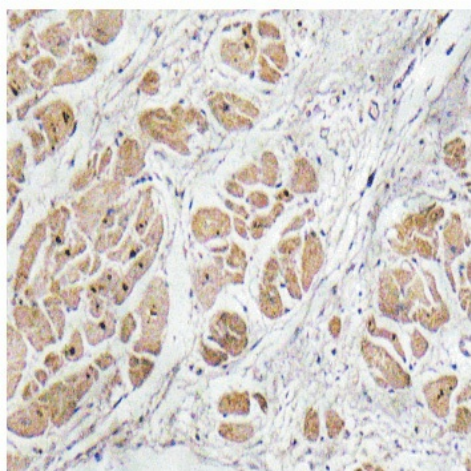
GnRH is produced by hypothalamic neurons and secreted in a pulsatile manner into the capillary plexus of the median eminence. GnRH affects the release of luteinizing hormone and follicle stimulating hormone from gonadotropic cells in the anterior pituitary. In addition to hypothalamic GnRH (GnRH I), a second GnRH form (GnRH II) functions primarily in the midbrain. GnRH is expressed in the acrosomal region of human sperm and in the anterior pituitary tissue and cancer cells. Unlike GnRH I, GnRH II is highly expressed outside the brain, particularly in the kidney, bone marrow and prostate, suggesting that it may have multiple functions. GnRH binds to a specific G protein-coupled receptor in the pituitary to regulate synthesis and secretion of gonadotropins.

**Synonyms:**

GNRH, GRH, LHRH

**Product images:**


Western blot analysis of GnRH 1 Antibody at 1/500 dilution: Lane 1: HeLa whole cell lysate. Lane 2: Raw264.7 whole cell lysate. Lane 3: H9C2 whole cell lysate.



Immunohistochemistry (IHC) analysis of GnRH 1 Antibody in paraffin-embedded human heart tissue.