

Product datasheet for **AP33392PU-N**

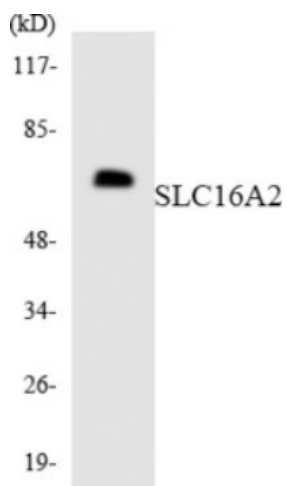
SLC16A2 (93-142) Rabbit Polyclonal Antibody

Product data:

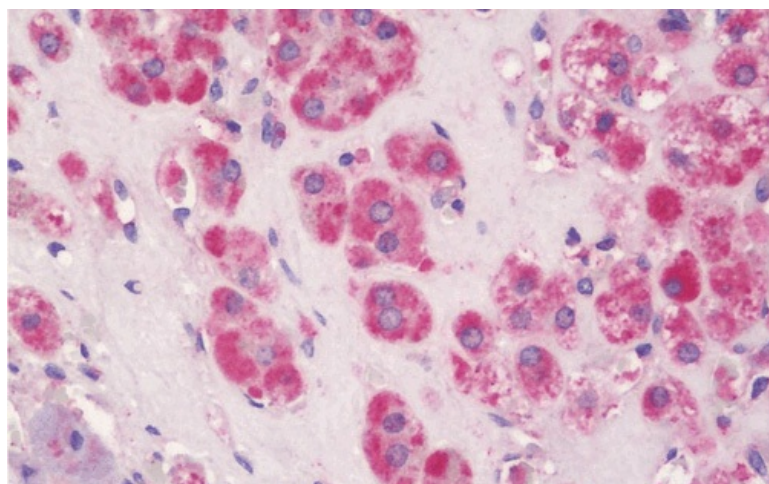
Product Type:	Primary Antibodies
Applications:	ELISA, IHC, WB
Recommended Dilution:	ELISA: 1/10000. Immunohistochemistry on Paraffin Sections: 1/200. Western Blot: 1/500 - 1/1000.
Reactivity:	Human, Mouse, Rat
Host:	Rabbit
Isotype:	IgG
Clonality:	Polyclonal
Immunogen:	SLC16A2 / MCT8 antibody was raised against synthetic peptide from Human SLC16A2 (aa93-142).
Specificity:	This antibody detects endogenous levels of SLC16A2.
Formulation:	PBS, pH 7.4, 150 mM Sodium Chloride State: Aff - Purified State: Liquid purified IgG fraction Stabilizer: 50% Glycerol Preservative: 0.02% Sodium Azide
Concentration:	lot specific
Purification:	Immunoaffinity Chromatography
Conjugation:	Unconjugated
Storage:	Upon receipt, store undiluted (in aliquots) at -20°C. Avoid repeated freezing and thawing.
Stability:	Shelf life: one year from despatch.
Gene Name:	solute carrier family 16 member 2
Database Link:	Entrez Gene 6567 Human P36021
Synonyms:	MCT8, MCT 8, Monocarboxylate transporter 8, MCT 7, Monocarboxylate transporter 7, XPCT



[View online »](#)

Product images:

Western blot of the lysates from HT-29 cells using SLC16A2 antibody.



Human Adrenal: Formalin-Fixed, Paraffin-Embedded (FFPE)