

Product datasheet for **AP33367PU-N**

EVC2 (C-term) Goat Polyclonal Antibody

Product data:

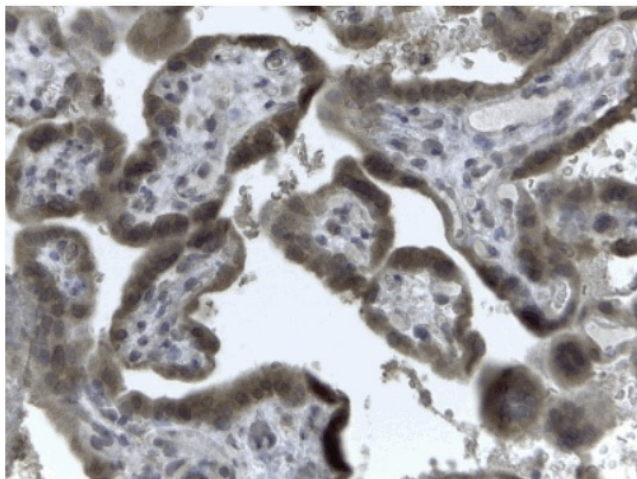
Product Type:	Primary Antibodies
Applications:	IHC
Recommended Dilution:	Peptide ELISA: 1/16000 (Detection Limit). Western Blot: Consistent band observed in 293 and human heart at approx 75kDa with 1 hour incubation of primary at 0.5 µg/ml. Immunohistochemistry on Paraffin Sections: 2-4 µg/ml. In paraffin embedded Human Placenta shows strong staining of the cytotrophoblasts.
Reactivity:	Human
Host:	Goat
Clonality:	Polyclonal
Immunogen:	Peptide with sequence from the C-Terminus of the protein sequence according to NP_667338.3; NP_001159608.1.
Specificity:	This antibody is expected to recognise both reported isoforms (NP_001026879.2 and NP_060833.1).
Formulation:	Tris saline, pH~7.3 State: Aff - Purified State: Liquid purified Ig fraction Stabilizer: 0.5% BSA Preservative: 0.02% Sodium Azide
Concentration:	lot specific
Purification:	Ammonium Sulphate precipitation followed by Antigen Affinity Chromatography using the immunizing peptide
Conjugation:	Unconjugated
Storage:	Store undiluted at 2-8°C for one month or (in aliquots) at -20°C for longer. Avoid repeated freezing and thawing.
Stability:	Shelf life: one year from despatch.
Gene Name:	EVC ciliary complex subunit 2
Database Link:	Entrez Gene 132884 Human Q86UK5



[View online »](#)

Synonyms: EVC2, LBN

Product images:



(2 ug/ml) staining of paraffin embedded Human Placenta. Steamed antigen retrieval with citrate buffer pH 6, HRP-staining.