

Product datasheet for **AP33366PU-N**

Her2 (ERBB2) (182-194) Goat Polyclonal Antibody

Product data:

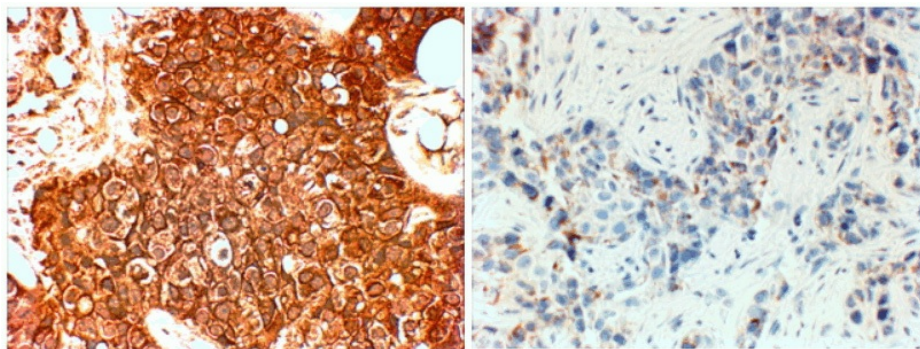
Product Type:	Primary Antibodies
Applications:	ELISA, IHC
Recommended Dilution:	Peptide ELISA: 1/128000 (Detection Limit). Immunohistochemistry on Paraffin Sections: 4-6 µg/ml. In paraffin embedded Human breast cancer shows cell membrane and cytoplasm staining in the affected cells of Her+ type and not in triple negative type.
Reactivity:	Human
Host:	Goat
Clonality:	Polyclonal
Immunogen:	Peptide with sequence from the internal region of the protein sequence according to NP_004439.2; NP_001005862.1.
Specificity:	This antibody is expected to recognize both reported isoforms (NP_004439.2; NP_001005862.1).
Formulation:	Tris saline, pH~7.3 State: Aff - Purified State: Liquid purified Ig fraction Stabilizer: 0.5% BSA Preservative: 0.02% Sodium Azide
Concentration:	lot specific
Purification:	Ammonium Sulphate precipitation followed by Antigen Affinity Chromatography using the immunizing peptide
Conjugation:	Unconjugated
Storage:	Store undiluted at 2-8°C for one month or (in aliquots) at -20°C for longer. Avoid repeated freezing and thawing.
Stability:	Shelf life: one year from despatch.
Gene Name:	erb-b2 receptor tyrosine kinase 2
Database Link:	Entrez Gene 2064 Human P04626



[View online »](#)

Synonyms: HER-2, NEU, p185erbB2, NGL, c-erbB-2, MNL19

Product images:



(4ug/ml) staining of paraffin embedded Human breast cancer (Her+ left, triple negative right). Steamed antigen retrieval with citrate buffer pH 6, HRP-staining.