

Product datasheet for **AP33340PU-S**

AMACR Rabbit Polyclonal Antibody

Product data:

Product Type:	Primary Antibodies
Applications:	IHC, WB
Recommended Dilution:	Western Blot: 1/100-1/200 for 2 hours at RT. Immunohistochemistry on Formalin-Fixed Paraffin Sections: 1/50-1/100 for 30-60 minutes at RT. Staining of formalin-fixed tissues requires boiling tissue sections in 1mM EDTA, pH 7.5-8.5, for 10-20 min followed by cooling at RT for 20 minutes. Positive Control: HEK cells or Prostate Adenocarcinoma.
Reactivity:	Human
Host:	Rabbit
Isotype:	IgG
Clonality:	Polyclonal
Immunogen:	A synthetic peptide from Human AMACR protein.
Specificity:	This antibody recognizes a protein of 54kDa, which is identified as AMACR, also known as p504S. Cellular Localization: Cytoplasmic.
Formulation:	10mM PBS State: Purified State: Liquid purified IgG fraction from Serum Stabilizer: 0.05% BSA Preservative: 0.05% Sodium Azide
Concentration:	lot specific
Purification:	Affinity Chromatography
Conjugation:	Unconjugated
Storage:	Store undiluted at 2-8°C.
Stability:	Shelf life: one year from despatch.
Predicted Protein Size:	54 kDa
Gene Name:	alpha-methylacyl-CoA racemase



[View online »](#)

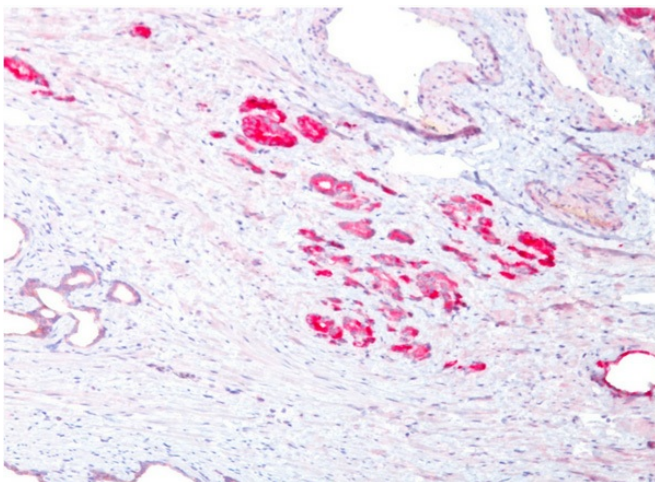
Database Link: [Entrez Gene 23600 Human Q9UHK6](#)

Background: AMACR, also known as p504S is an enzyme that is involved in bile acid biosynthesis and β -oxidation of branched-chain fatty acids. AMACR is expressed in cells of premalignant high-grade prostatic intraepithelial neoplasia (HGPIN) and prostate adenocarcinoma. The majority of the carcinoma cells show a distinct granular cytoplasmic staining reaction. AMACR is present at low or undetectable levels in glandular epithelial cells of normal prostate and benign prostatic hyperplasia. A spotty granular cytoplasmic staining is seen in a few cells of the benign glands.

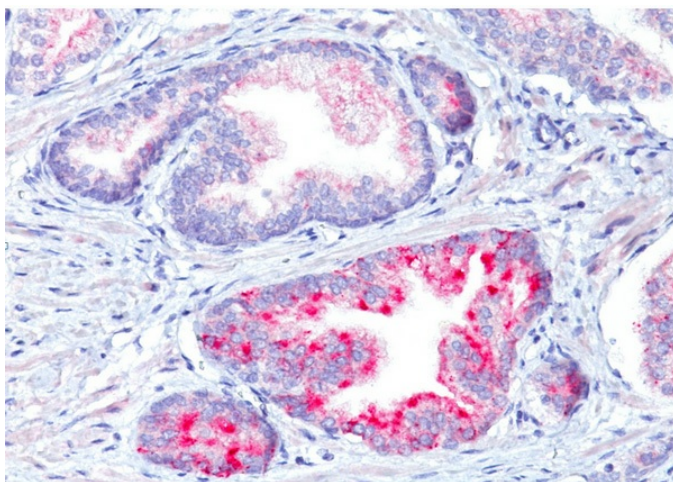
AMACR is expressed in normal liver (hepatocytes), kidney (tubular epithelial cells) and gall bladder (epithelial cells). Expression has also been found in lung (bronchial epithelial cells) and colon (colonic surface epithelium). AMACR expression can also be found in hepatocellular carcinoma and kidney carcinoma. Past studies have also shown that AMACR is expressed in various colon carcinomas (well, moderately and poorly differentiated) and over expressed in prostate carcinoma.

Synonyms: Alpha-methylacyl-CoA racemase, P504S

Product images:



Formalin-Fixed, Paraffin-Embedded Human prostate carcinoma (10X) Stained with AMACR / p504S Antibody.



Formalin-Fixed, Paraffin-Embedded Human prostate carcinoma (20X) Stained with AMACR / p504S Antibody.