

Product datasheet for **AP33338PU-N**

Amyloid beta A4 protein / APP (501-522) Chicken Polyclonal Antibody

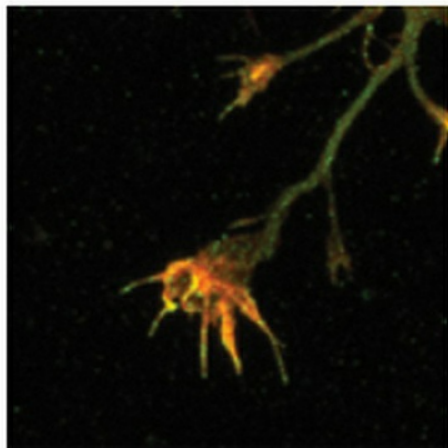
Product data:

Product Type:	Primary Antibodies
Applications:	IF, IHC
Recommended Dilution:	Immunocytochemistry. Immunohistochemistry. Recommended Dilutions: 1/500-1/1000 for Immunohistochemistry and Immunocytochemistry using 2% paraformaldehyde-fixed tissues or cells. Quality Control: This anti-Peptide antibody mixture was analyzed by Immunohistochemistry (1/1000 dilution) using Fluorescein-labeled Goat anti-Chicken IgY (1/500 dilution, Cat.-No AP31795FC-N) as the secondary reagent.
Reactivity:	Human, Mouse, Rat
Host:	Chicken
Isotype:	IgY
Clonality:	Polyclonal
Immunogen:	Chickens were immunized with synthetic peptide APP#4 conjugated to keyhole limpet hemocyanin (KLH). The sequence of APP peptide #4 is EQK DRQ HTL KHF EHV RMV DPK K, which corresponds to residues #501-522 of the Human gene product (NP_000475.1)]. Identical sequences are also found in the Mouse and Rat homologs of APP.
Specificity:	Recognizes Amyloid Precursor Protein (APP), Peptide #4.
Formulation:	Sodium Phosphate-Buffered (10 mM) isotonic (0.9%, w/v) Saline (PBS, pH 7.2) State: Aff - Purified State: Liquid purified (filter sterilized) IgY fraction Preservative: 0.02% (w/v) Sodium Azide
Concentration:	lot specific
Purification:	Affinity Chromatography using a peptide column. Preparation: After repeated injections, immune eggs were collected, and the IgY fractions were purified from the yolks. These IgY fractions were then affinity-purified using a peptide column, and the concentrations of the eluates adjusted to 100 ug/ml. Finally, equal volumes of these affinity-purified anti-peptide antibodies were mixed, and the preparation was filter-sterilized.
Conjugation:	Unconjugated



[View online »](#)

Storage:	Store the antibody undiluted in the dark at 2-8°C.
Stability:	Shelf life: one year from despatch.
Gene Name:	amyloid beta precursor protein
Database Link:	Entrez Gene 351 Human P05067
Synonyms:	Alzheimer disease amyloid protein, Amyloid Precursor Protein, ABPP, APPI, PreA4, Cerebral vascular amyloid peptide, CVAP

Product images:

Amyloid Precursor Protein (APP), Peptide #4: Mouse cortical neurons in culture. The green staining is APP-immunoreactivity, using fluorescein-labeled Goat anti-Chicken IgY (Cat.-No [AP31795FC-N]) and rhodamine-labeled phalloidin as a counterstain. Note the AP