

## Product datasheet for **AP33337PU-N**

### Amyloid beta A4 protein / APP (433-452) Chicken Polyclonal Antibody

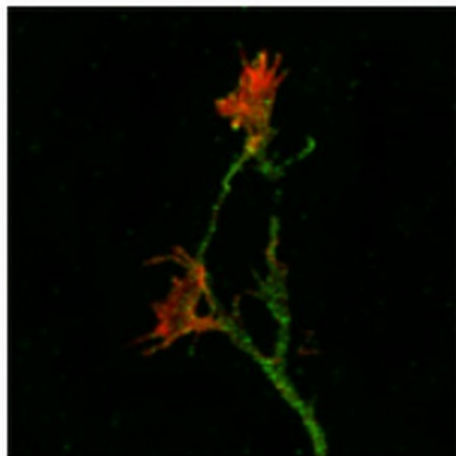
#### Product data:

Product Type:	Primary Antibodies
Applications:	IF, IHC
Recommended Dilution:	<b>Immunocytochemistry.</b> <b>Immunohistochemistry.</b> <b>Recommended Dilutions:</b> 1/500-1/1000 for Immunohistochemistry and Immunocytochemistry using 2% paraformaldehyde-fixed tissues or cells. <b>Quality Control:</b> This anti-Peptide antibody mixture was analyzed by Immunohistochemistry (1/1000 dilution) using Fluorescein-labeled Goat anti-Chicken IgY (1/500 dilution, Cat.-No AP31795FC-N) as the secondary reagent.
Reactivity:	Human, Mouse, Rat
Host:	Chicken
Isotype:	IgY
Clonality:	Polyclonal
Immunogen:	Chickens were immunized with a Keyhole Limpet Hemocyanin (KLH) conjugate of the synthetic peptide QHF QEK VES LEQ EAA NER QQ, which corresponds to residues #433-452 of the Human gene product (NP_000475.1). This sequence is also conserved in the Mouse and Rat APP gene products, as well.
Specificity:	Recognizes Amyloid Precursor Protein (APP), Peptide #3.
Formulation:	Sodium Phosphate-Buffered (10 mM) isotonic (0.9%, w/v) Saline (PBS, pH 7.2) State: Aff - Purified State: Liquid purified (filter sterilized) IgY fraction Preservative: 0.02% (w/v) Sodium Azide
Concentration:	lot specific
Purification:	Affinity Chromatography using a peptide column. <b>Preparation:</b> After repeated injections, immune eggs were collected from the hens, and the IgY fractions were purified from the yolks. These IgY fractions were then affinity-purified against the cognate peptide using an agarose column, the concentration of the eluates adjusted to 100 µg/ml, and the preparation was filter-sterilized.
Conjugation:	Unconjugated



[View online »](#)

<b>Storage:</b>	Store the antibody undiluted in the dark at 2-8°C.
<b>Stability:</b>	Shelf life: one year from despatch.
<b>Gene Name:</b>	amyloid beta precursor protein
<b>Database Link:</b>	<a href="#">Entrez Gene 351 Human P05067</a>
<b>Synonyms:</b>	Alzheimer disease amyloid protein, Amyloid Precursor Protein, ABPP, APPI, PreA4, Cerebral vascular amyloid peptide, CVAP

**Product images:**

Amyloid Precursor Protein (APP), Peptide #3: Mouse cortical neurons in culture. The green staining is APP-immunoreactivity, using Fluorescein-labeled Goat anti-Chicken IgY ([AP31795FC-N]) and Rhodamine-labeled phalloidin as a counterstain. Note the APP-stain