

## Product datasheet for **AP33335SU-S**

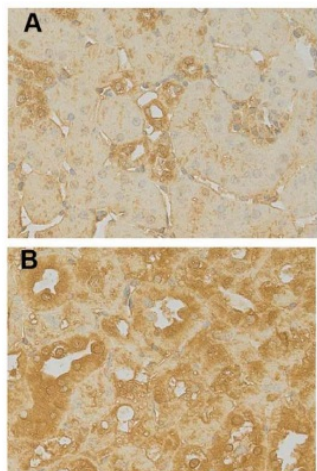
### MGP Goat Polyclonal Antibody

#### Product data:

Product Type:	Primary Antibodies
Applications:	ELISA, IHC, WB
Recommended Dilution:	<b>ELISA:</b> 1/200-1/80000. <b>Western Blot:</b> 1/200-1/80000. <b>Immunohistochemistry on Frozen Sections.</b> <b>Immunohistochemistry on Paraffin Sections:</b> 1/200 (Ref.1-3).
Host:	Goat
Clonality:	Polyclonal
Immunogen:	Malondialdehyde-modified KLH.
Specificity:	This antibody detects MDA-LDL and other MDA-modified proteins.
Formulation:	State: Serum State: Lyophilized Serum Preservative: 0.09% Sodium Azide
Reconstitution Method:	Restore in aqua bidest to initial volume
Conjugation:	Unconjugated
Storage:	Store lyophilized at 2-8°C for 6 months or at -20°C long term. After reconstitution store the antibody undiluted at 2-8°C for one month or (in aliquots) at -20°C long term. Avoid repeated freezing and thawing.
Stability:	Shelf life: one year from despatch.
Gene Name:	matrix Gla protein
Database Link:	<a href="#">P08493</a>
Synonyms:	MGP, MGLAP, GIG36
Note:	Locus ID 4256



[View online »](#)

**Product images:**

**Immunofluorescence** image of MDA-positive staining in paraffin section of murine kidney tissue. The sections were incubated with AP33335SU (1/200) and stained using HRP-DAB system. (A) Non-diabetic eNos knock-out mice show significantly less renal MDA staining than (B) diabetic eNos knock out mice. Ott IM et al (2012). PLoS ONE 7(8):e42623.