

## Product datasheet for **AP33298PU-N**

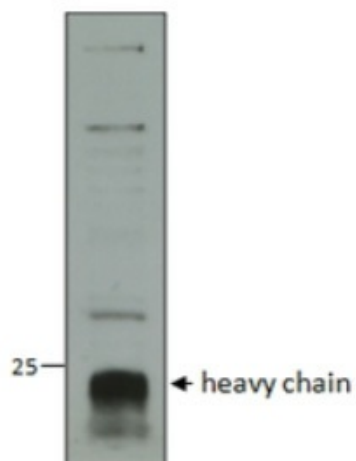
### **DPP1 (CTSC) (238-252) Goat Polyclonal Antibody**

#### **Product data:**

Product Type:	Primary Antibodies
Applications:	ELISA, IHC, WB
Recommended Dilution:	<b>ELISA:</b> 1/128000 (Detection Limit). <b>Western Blot:</b> 1-3 µg/ml. Approx 24kDa band observed in Human Neutrophils lysates (calculated MW of 51.8kDa according to NP_001805.3). <b>Immunohistochemistry on Paraffin Sections:</b> 5 µg/ml in paraffin embedded Human Lung and Kidney.
Reactivity:	Human
Host:	Goat
Clonality:	Polyclonal
Immunogen:	Synthetic peptide from the internal region of the protein sequence according to NP_001805.3.
Specificity:	This antibody is expected to recognize isoform a (NP_001805.3) only.
Formulation:	Tris saline, pH~7.3 State: Aff - Purified State: Liquid purified Ig fraction Stabilizer: 0.5% BSA Preservative: 0.02% Sodium Azide
Concentration:	lot specific
Purification:	Immunoaffinity Chromatography
Conjugation:	Unconjugated
Storage:	Upon receipt, store undiluted (in aliquots) at -20°C. Avoid repeated freezing and thawing.
Stability:	Shelf life: one year from despatch.
Gene Name:	cathepsin C
Database Link:	<a href="#">Entrez Gene 1075 Human P53634</a>
Synonyms:	Dipeptidyl-peptidase 1, Cathepsin J, Dipeptidyl transferase, CTSC, CPPI, DPPI



[View online »](#)

**Product images:**

Staining of Human Neutrophils lysate using Cathepsin C Antibody at 1 ug/ml (35ug protein in RIPA buffer). Data obtained from anonymous customer. Primary incubation was 1 hour. Detected by chemiluminescence.