

## Product datasheet for **AP33296PU-N**

### Insulin-like growth factor II / IGF2 (81-93) Goat Polyclonal Antibody

#### Product data:

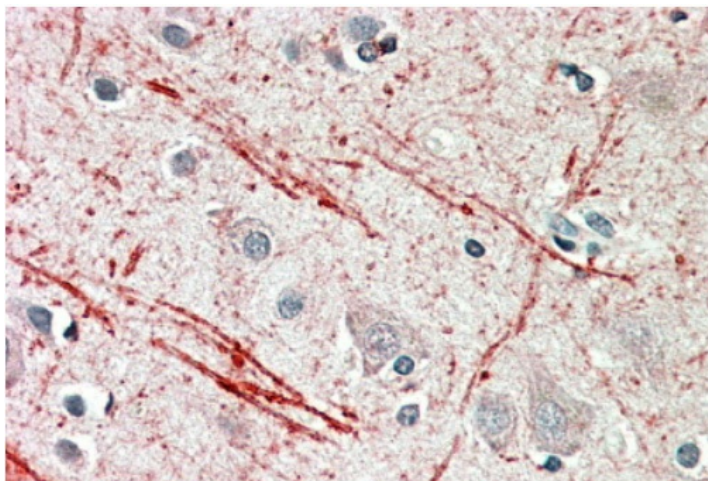
Product Type:	Primary Antibodies
Applications:	ELISA, IHC
Recommended Dilution:	<b>Peptide ELISA:</b> 1/64000 (Detection Limit). <b>Immunohistochemistry on Paraffin Sections:</b> 5-10 µg/ml. In paraffin embedded Human Cerebellum shows axonal staining.
Reactivity:	Bovine, Canine, Human, Mouse, Porcine, Rat
Host:	Goat
Clonality:	Polyclonal
Immunogen:	Peptide with sequence from the internal region of the protein sequence according to NP_000603.1; NP_001121070.1.
Specificity:	This antibody is expected to recognize both reported isoforms (NP_000603.1; NP_001121070.1). Reported variants represent identical protein: NP_000603.1, NP_001007140.2.
Formulation:	Tris saline, pH~7.3 State: Aff - Purified State: Liquid purified Ig fraction Stabilizer: 0.5% BSA Preservative: 0.02% Sodium Azide
Concentration:	lot specific
Purification:	Ammonium Sulphate Precipitation followed by Antigen Affinity Chromatography using the immunizing peptide
Conjugation:	Unconjugated
Storage:	Store undiluted at 2-8°C for one month or (in aliquots) at -20°C for longer. Avoid repeated freezing and thawing.
Stability:	Shelf life: one year from despatch.
Gene Name:	insulin like growth factor 2
Database Link:	<a href="#">Entrez Gene 3481 Human P01344</a>



[View online »](#)

Synonyms: IGF-II, Somatomedin-A

**Product images:**



Staining of paraffin embedded Human Cerebellum using IGF2 Antibody Cat.-No AP33296PU-N at 5 g/ml. Steamed antigen retrieval with citrate buffer pH 6, AP-staining.