

Product datasheet for **AP33295PU-N**

UBR4 (C-term) Goat Polyclonal Antibody

Product data:

Product Type:	Primary Antibodies
Applications:	ELISA, IHC
Recommended Dilution:	Peptide ELISA: 1/128000 (Detection Limit). Immunohistochemistry on Paraffin Sections: 5-10 µg/ml. In paraffin embedded Spleen shows various types of subnuclear staining in select splenocytes and additional membrane plus cytoplasm staining elsewhere.
Reactivity:	Bovine, Canine, Human, Mouse, Rat
Host:	Goat
Clonality:	Polyclonal
Immunogen:	Peptide with sequence from the C Terminus of the protein sequence according to NP_065816.2.
Specificity:	This antibody recognizes UBR4 / ZUBR1.
Formulation:	Tris saline, pH~7.3 State: Aff - Purified State: Liquid purified Ig fraction Stabilizer: 0.5% BSA Preservative: 0.02% Sodium Azide
Concentration:	lot specific
Purification:	Ammonium Sulphate Precipitation followed by Antigen Affinity Chromatography using the immunizing peptide
Conjugation:	Unconjugated
Storage:	Store undiluted at 2-8°C for one month or (in aliquots) at -20°C for longer. Avoid repeated freezing and thawing.
Stability:	Shelf life: one year from despatch.
Gene Name:	ubiquitin protein ligase E3 component n-recognin 4
Database Link:	Entrez Gene 23352 Human Q5T4S7



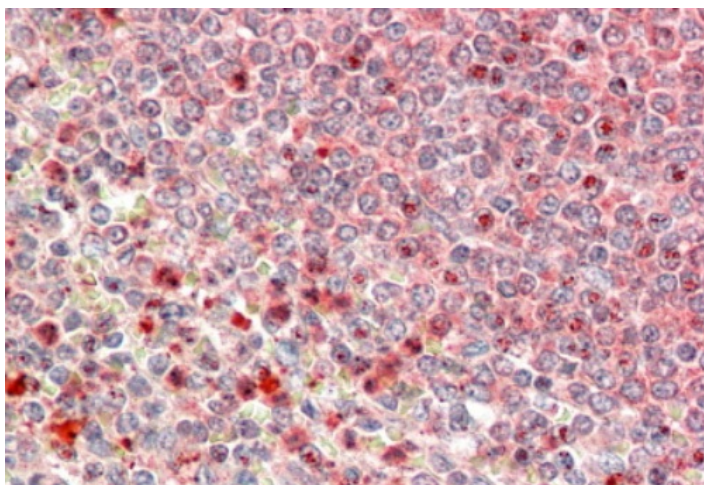
[View online »](#)

Background:

p600 is an E3 ubiquitin-protein ligase which is a component of the N-end rule pathway. It recognizes and binds to proteins bearing specific N-terminal residues that are destabilizing according to the N-end rule, leading to their ubiquitination and subsequent degradation. Together with clathrin, p600 forms meshwork structures involved in membrane morphogenesis and cytoskeletal organization. Additionally p600 regulates integrin-mediated signaling and may play a role in activation of FAK in response to cell-matrix interactions.

Synonyms:

KIAA0462, KIAA1307, RBAF600, ZUBR1

Product images:

Staining of paraffin embedded Human Spleen using UBR4 Antibody at 5 ug/ml. Steamed antigen retrieval with citrate buffer pH 6, AP-staining.