

## Product datasheet for **AP33293PU-N**

### thrb Goat Polyclonal Antibody

#### Product data:

Product Type:	Primary Antibodies
Applications:	ELISA, WB
Recommended Dilution:	<b>Peptide ELISA:</b> 1/32000 (Detection Limit). <b>Western blot:</b> 2-5 µg/ml. Approx 50kDa band observed in Zebrafish adult Heart lysates (calculated MW of 44.3kDa according to NP_571415.1).
Reactivity:	Zebrafish
Host:	Goat
Clonality:	Polyclonal
Immunogen:	Peptide with sequence from the internal region of the protein sequence according to NP_571415.1.
Specificity:	This antibody recognizes Thrb (Zebrafish) and is not expected to cross-react to THRA.
Formulation:	Tris saline, pH~7.3 State: Aff - Purified State: Liquid purified Ig fraction Stabilizer: 0.5% BSA Preservative: 0.02% Sodium Azide
Concentration:	lot specific
Purification:	Ammonium Sulphate Precipitation followed by Antigen Affinity Chromatography using the immunizing peptide
Conjugation:	Unconjugated
Storage:	Store undiluted at 2-8°C for one month or (in aliquots) at -20°C for longer. Avoid repeated freezing and thawing.
Stability:	Shelf life: one year from despatch.
Gene Name:	thyroid hormone receptor beta
Database Link:	<a href="#">Entrez Gene 30607 Zebrafish Q9PVE4</a>



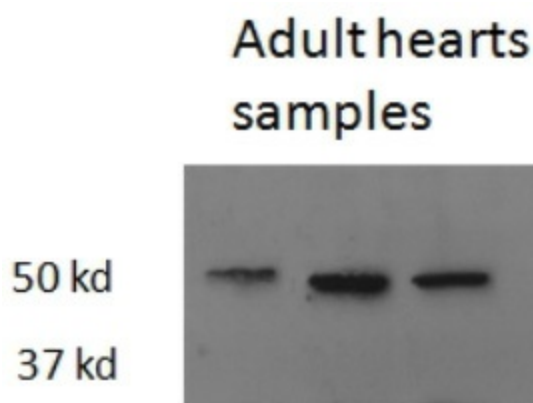
[View online »](#)

**Background:**

Thyroid hormone receptors (TRs) are ligand dependent members of the steroid/retinoic acid superfamily of transcription factors. The two genes encoding TRs identified to date, TRAlpha and TRBeta, have been mapped to human chromosomes 17 and 3, respectively. TRs bind to thyroid hormone response elements (TREs) with half site binding motifs in the orientation of palindromes, direct repeats, or inverted palindromes. The affinities of binding are both variable and influenced differentially by 3,5,3-triiodo-L-thyronine (T-3).

**Synonyms:**

Thyroid hormone receptor beta, THR1, NR1A2

**Product images:**

Staining of Zebrafish adult Heart lysate using THRB Antibody at 2.5 ug/ml (35ug protein in RIPA buffer). Primary incubation was 1 hour. Detected by chemiluminescence.