

## Product datasheet for **AP33292PU-N**

### ZIC3 (178-189) Goat Polyclonal Antibody

#### Product data:

Product Type:	Primary Antibodies
Applications:	ELISA, IHC
Recommended Dilution:	<b>Peptide ELISA:</b> 1/64000 (Detection Limit). <b>Western blot:</b> Preliminary experiments gave an approx 70kDa band in Human, Mouse and Rat Brain lysates after 1µg/ml antibody staining. Please note that currently we cannot find an explanation in the literature for the band we observe given the calculated size of 50.6kDa according to NP_003404.1. The 70kDa band was successfully blocked by incubation with the immunizing peptide. <b>Immunohistochemistry on Paraffin Sections:</b> 5-10 µg/ml. In paraffin embedded Human Prostate shows nuclear staining in select secretory cells.
Reactivity:	Bovine, Human, Mouse, Porcine, Rat
Host:	Goat
Clonality:	Polyclonal
Immunogen:	Peptide with sequence from the internal region of the protein sequence according to NP_003404.1.
Specificity:	This antibody detects ZIC3 (178-189) and is expected NOT to cross-react with other ZIC proteins.
Formulation:	Tris saline, pH~7.3 State: Aff - Purified State: Liquid purified Ig fraction Stabilizer: 0.5% BSA Preservative: 0.02% Sodium Azide
Concentration:	lot specific
Purification:	Ammonium Sulphate Precipitation followed by Antigen Affinity Chromatography using the immunizing peptide
Conjugation:	Unconjugated
Storage:	Store undiluted at 2-8°C for one month or (in aliquots) at -20°C for longer. Avoid repeated freezing and thawing.
Stability:	Shelf life: one year from despatch.



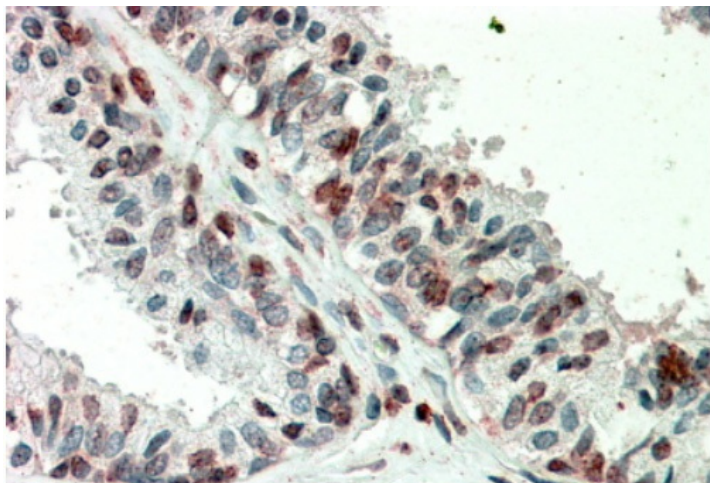
[View online »](#)

Gene Name: Zic family member 3

Database Link: [Entrez Gene 7547 Human O60481](#)

Synonyms: HTX; HTX1; ZNF203

**Product images:**



Staining of paraffin embedded Human Prostate using ZIC3 Antibody at 5 ug/ml. Steamed antigen retrieval with citrate buffer pH 6, AP-staining.