

Product datasheet for **AP33289PU-N**

JMY (C-term) Rabbit Polyclonal Antibody

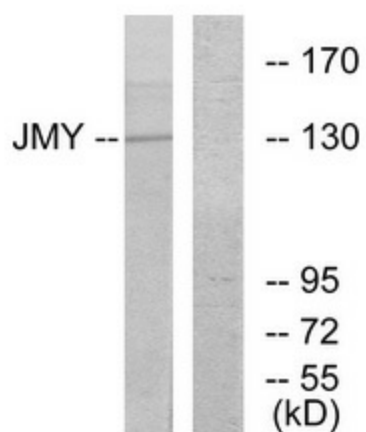
Product data:

Product Type:	Primary Antibodies
Applications:	ELISA, IHC, WB
Recommended Dilution:	ELISA: 1/1000. Immunohistochemistry on Paraffin Sections: 1/100. Western Blot: 1/500 - 1/1000.
Reactivity:	Human, Mouse
Host:	Rabbit
Isotype:	IgG
Clonality:	Polyclonal
Immunogen:	Synthetic peptide from the C-terminal region of Human JMY. Epitope: 931-980.
Specificity:	This antibody detects endogenous levels of total JMY protein.
Formulation:	PBS (without Mg ²⁺ , Ca ²⁺), pH 7.4 State: Aff - Purified State: Liquid purified Ig fraction Stabilizer: 50% Glycerol Preservative: 0.02% Sodium Azide
Concentration:	lot specific
Purification:	Immunoaffinity Chromatography
Conjugation:	Unconjugated
Storage:	Upon receipt, store undiluted (in aliquots) at -20°C. Avoid repeated freezing and thawing.
Stability:	Shelf life: one year from despatch.
Gene Name:	junction mediating and regulatory protein, p53 cofactor
Database Link:	Entrez Gene 133746 Human Q8N9B5
Synonyms:	FLJ37870; MGC163496; WHDC1L3

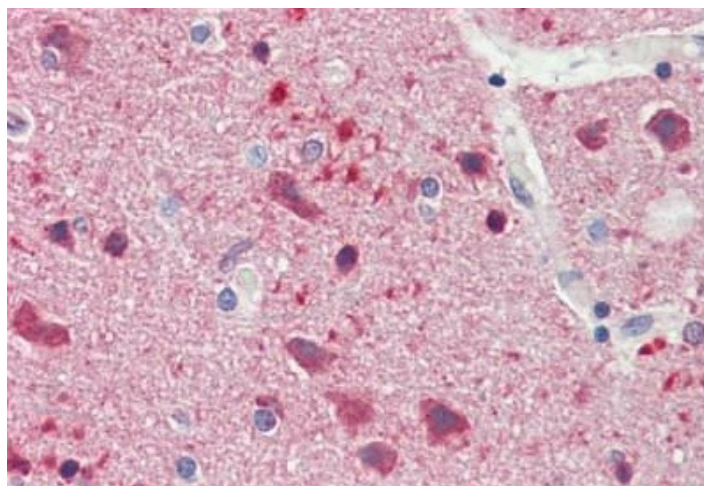


[View online »](#)

Product images:



Western blot of extracts from COLO cells, using JMY Antibody. The lane on the right is treated with the synthesized peptide.



Human Brain, Cortex: Formalin-Fixed, Paraffin-Embedded (FFPE)