

Product datasheet for **AP33276PU-N**

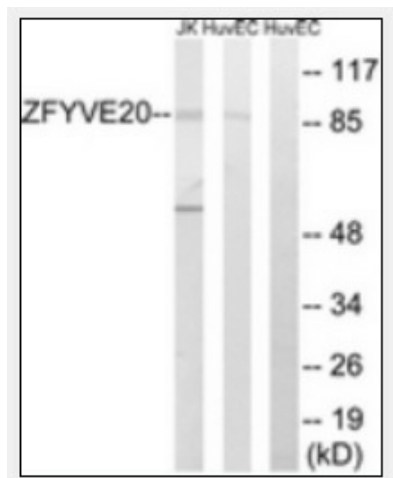
Rabenosyn 5 (RBSN) (145-194) Rabbit Polyclonal Antibody

Product data:

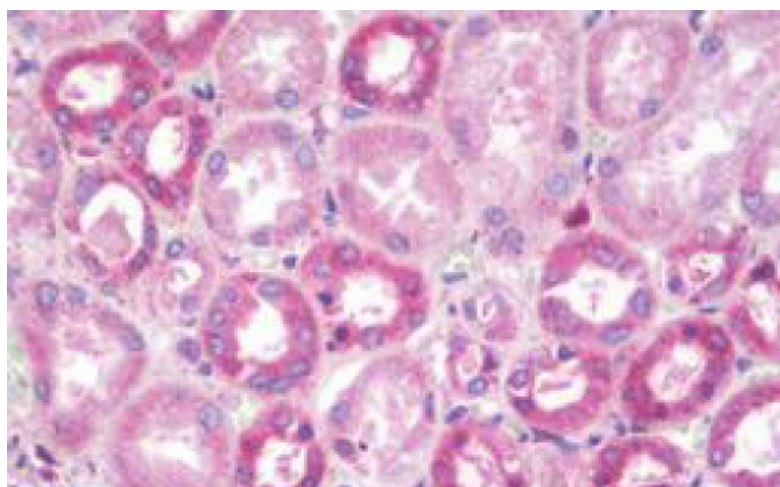
Product Type:	Primary Antibodies
Applications:	ELISA, IHC, WB
Recommended Dilution:	ELISA: 1/10000. Immunohistochemistry on Paraffin Sections: 1/100. Western Blot: 1/500 - 1/1000.
Reactivity:	Human, Mouse
Host:	Rabbit
Isotype:	IgG
Clonality:	Polyclonal
Immunogen:	Synthetic peptide from Human ZFYVE20. Epitope: 154-194.
Specificity:	This antibody detects endogenous levels of total ZFYVE20 protein.
Formulation:	PBS (without Mg ²⁺ , Ca ²⁺), pH 7.4 State: Aff - Purified State: Liquid purified Ig fraction Stabilizer: 50% Glycerol Preservative: 0.02% Sodium Azide
Concentration:	lot specific
Purification:	Immunoaffinity Chromatography
Conjugation:	Unconjugated
Storage:	Upon receipt, store undiluted (in aliquots) at -20°C. Avoid repeated freezing and thawing.
Stability:	Shelf life: one year from despatch.
Gene Name:	rabenosyn, RAB effector
Database Link:	Entrez Gene 64145 Human Q9H1K0
Synonyms:	Rabenosyn 5



[View online »](#)

Product images:

Western blot of extracts from HUVEC/Jurkat cells, using ZFYVE20 Antibody. The lane on the right is treated with the synthesized peptide.



Human Kidney: Formalin-Fixed, Paraffin-Embedded (FFPE)