

Product datasheet for **AP33274PU-N**

RABEP2 (353-402) Rabbit Polyclonal Antibody

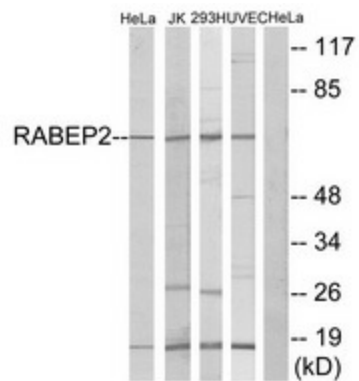
Product data:

Product Type:	Primary Antibodies
Applications:	ELISA, IHC, WB
Recommended Dilution:	ELISA: 1/10000. Immunohistochemistry on Paraffin Sections: 1/100. Western Blot: 1/500 - 1/1000.
Reactivity:	Human, Mouse, Rat
Host:	Rabbit
Isotype:	IgG
Clonality:	Polyclonal
Immunogen:	Synthetic peptide from Human RABEP2. Epitope: 353-402.
Specificity:	This antibody detects endogenous levels of total RABEP2 protein.
Formulation:	PBS (without Mg ²⁺ , Ca ²⁺), pH 7.4 State: Aff - Purified State: Liquid purified Ig fraction Stabilizer: 50% Glycerol Preservative: 0.02% Sodium Azide
Concentration:	lot specific
Purification:	Immunoaffinity Chromatography
Conjugation:	Unconjugated
Storage:	Upon receipt, store undiluted (in aliquots) at -20°C. Avoid repeated freezing and thawing.
Stability:	Shelf life: one year from despatch.
Gene Name:	rabaptin, RAB GTPase binding effector protein 2
Database Link:	Entrez Gene 79874 Human Q9H5N1
Synonyms:	Rabaptin-5beta, RABPT5B

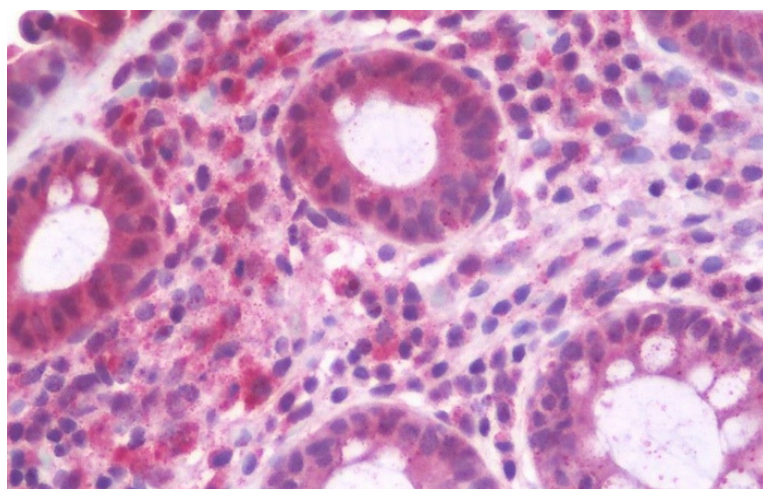


[View online »](#)

Product images:



Western blot of extracts from HeLa/Jurkat/293/HUVEC cells, using RABEP2 Antibody.



Human Colon: Formalin-Fixed, Paraffin-Embedded (FFPE)