

## Product datasheet for **AP33272PU-N**

### **POM121 (1197-1246) Rabbit Polyclonal Antibody**

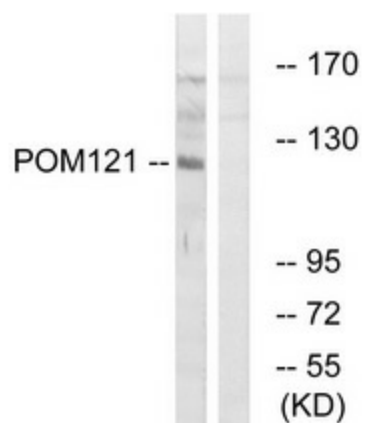
#### Product data:

Product Type:	Primary Antibodies
Applications:	ELISA, IHC, WB
Recommended Dilution:	<b>ELISA:</b> 1/40000. <b>Immunohistochemistry on Paraffin Sections:</b> 1/100. <b>Western Blot:</b> 1/500 - 1/1000.
Reactivity:	Human, Mouse, Rat
Host:	Rabbit
Isotype:	IgG
Clonality:	Polyclonal
Immunogen:	Synthetic peptide from the C-terminal region of Human POM121. <b>Epitope:</b> 1197-1246.
Specificity:	This antibody detects endogenous levels of total POM121 protein.
Formulation:	PBS (without Mg <sup>2+</sup> , Ca <sup>2+</sup> ), pH 7.4 State: Aff - Purified State: Liquid purified Ig fraction Stabilizer: 50% Glycerol Preservative: 0.02% Sodium Azide
Concentration:	lot specific
Purification:	Immunoaffinity Chromatography
Conjugation:	Unconjugated
Storage:	Upon receipt, store undiluted (in aliquots) at -20°C. Avoid repeated freezing and thawing.
Stability:	Shelf life: one year from despatch.
Gene Name:	POM121 transmembrane nucleoporin
Database Link:	<a href="#">Entrez Gene 9883 Human Q96HA1</a>
Synonyms:	POM 121, POM121A, NUP121, KIAA0618

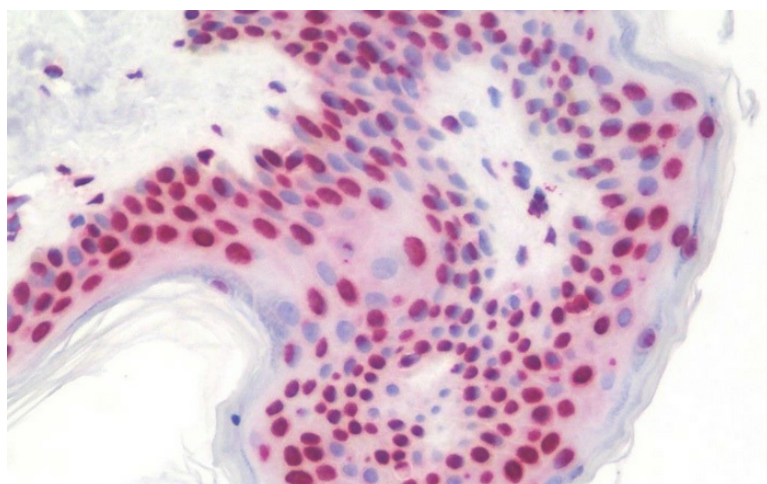


[View online »](#)

Product images:



Western blot of extracts from K562 cells, using POM121 Antibody.



Human Skin: Formalin-Fixed, Paraffin-Embedded (FFPE)