

Product datasheet for **AP33262PU-N**

BRCA1 / RNF53 (N-term) Rabbit Polyclonal Antibody

Product data:

Product Type:	Primary Antibodies
Applications:	WB
Recommended Dilution:	Western blot: 1000.
Reactivity:	Human
Host:	Rabbit
Isotype:	Ig
Clonality:	Polyclonal
Immunogen:	KLH conjugated synthetic peptide between 443-472 amino acids from the N-terminal region of Human BRCA1.
Specificity:	This antibody recognizes Human BRCA1/RNF53 (N-term). Other species not tested.
Formulation:	PBS State: Aff - Purified State: Liquid purified Ig fraction Preservative: 0.09% (W/V) Sodium Azide
Concentration:	lot specific
Purification:	Protein A Chromatography, followed by peptide affinity purification
Conjugation:	Unconjugated
Storage:	Store undiluted at 2-8°C for one month or (in aliquots) at -20°C for longer. Avoid repeated freezing and thawing.
Stability:	Shelf life: one year from despatch.
Predicted Protein Size:	207721 Da
Gene Name:	BRCA1, DNA repair associated
Database Link:	Entrez Gene 672 Human P38398



[View online »](#)

Background:

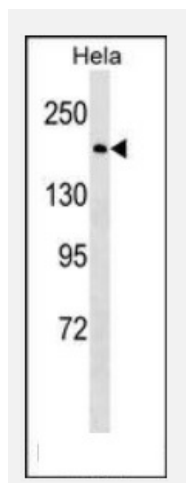
This gene encodes a nuclear phosphoprotein that plays a role in maintaining genomic stability, and it also acts as a tumor suppressor. The encoded protein combines with other tumor suppressors, DNA damage sensors, and signal transducers to form a large multi-subunit protein complex known as the BRCA1-associated genome surveillance complex (BASC). This gene product associates with RNA polymerase II, and through the C-terminal domain, also interacts with histone deacetylase complexes. This protein thus plays a role in transcription, DNA repair of double-stranded breaks, and recombination. Mutations in this gene are responsible for approximately 40% of inherited breast cancers and more than 80% of inherited breast and ovarian cancers. Alternative splicing plays a role in modulating the subcellular localization and physiological function of this gene. Many alternatively spliced transcript variants, some of which are disease-associated mutations, have been described for this gene, but the full-length nature of only some of these variants has been described. A related pseudogene, which is also located on chromosome 17, has been identified. [provided by RefSeq].

Cellular Location: Nucleus. Chromosome (By similarity). Note: Localizes at sites of DNA damage at double-strand breaks (DSBs); recruitment to DNA damage sites is mediated by the BRCA1-A complex Isoform 5: Cytoplasm.

Tissue Location: Isoform 1 and isoform 3 are widely expressed. Isoform 3 is reduced or absent in several breast and ovarian cancer cell lines.

Synonyms:

BRCA1; BRCC1; BROVCA1; IRIS; PSCP; RNF53

Product images:

Western blot analysis in HeLa cell line lysates using BRCA1 Antibody (N-term) Cat.-NoAP33262PU-N (35ug/lane). This demonstrates the BRCA1 antibody detected the BRCA1 protein (arrow).