

Product datasheet for **AP33224PU-N**

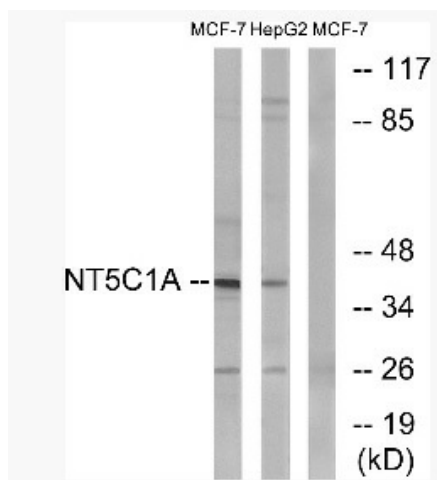
NT5C1A (151-200) Rabbit Polyclonal Antibody

Product data:

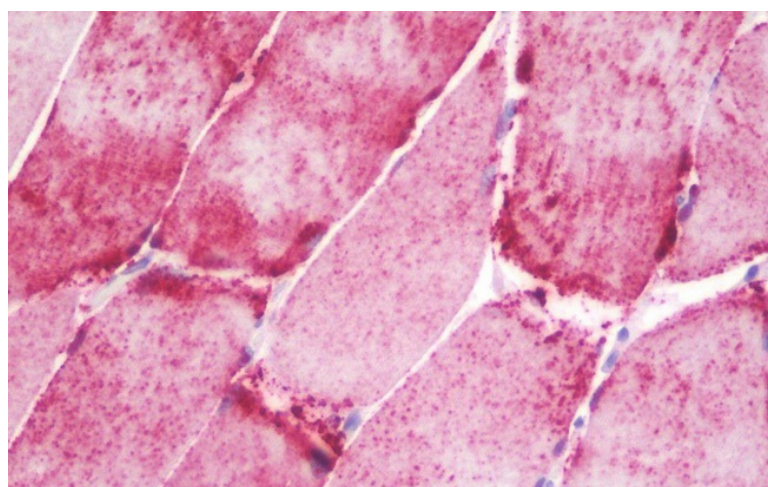
| | |
|-------------------------|---|
| Product Type: | Primary Antibodies |
| Applications: | ELISA, IF, IHC, WB |
| Recommended Dilution: | ELISA: 1/20000. Immunofluorescence: 1/100 - 1/500. Immunohistochemistry on Paraffin Sections: 1/100. Western Blot: 1/500 - 1/1000. |
| Reactivity: | Human, Mouse |
| Host: | Rabbit |
| Isotype: | IgG |
| Clonality: | Polyclonal |
| Immunogen: | Synthetic peptide derived from the intrnal (151-200) region of Human NT5C1A |
| Specificity: | This antibody detects endogenous levels of total NT5C1A protein. |
| Formulation: | PBS (without Mg ²⁺ and Ca ²⁺), pH 7.4, 150mM NaCl, 0.02% Sodium Azide and 50% Glycerol State: Aff - Purified State: Liquid purified IgG fraction |
| Purification: | Immunoaffinity Chromatography |
| Conjugation: | Unconjugated |
| Storage: | Upon receipt, store undiluted (in aliquots) at -20°C. Avoid repeated freezing and thawing. |
| Stability: | Shelf life: one year from despatch. |
| Predicted Protein Size: | 41 kDa |
| Gene Name: | 5'-nucleotidase, cytosolic IA |
| Database Link: | Entrez Gene 84618 Human Q9BXI3 |
| Background: | Dephosphorylates the 5' and 2'(3')-phosphates of deoxyribonucleotides and has a broad substrate specificity. Helps to regulate adenosine levels in heart during ischemia and hypoxia. |
| Synonyms: | cN-I, cN-IA |



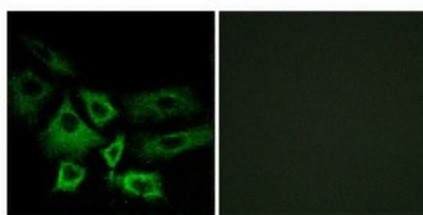
[View online »](#)

Product images:


Western blot analysis of extracts from MCF-7/HepG2 cells, using NT5C1A Antibody. The lane on the right is treated with the synthesized peptide.



Formalin-Fixed, Paraffin-Embedded Human Skeletal Muscle stained with NT5C1A Antibody



Immunofluorescence analysis of A549 cells, using NT5C1A Antibody. The picture on the right is treated with the synthesized peptide.