

Product datasheet for **AP33223PU-N**

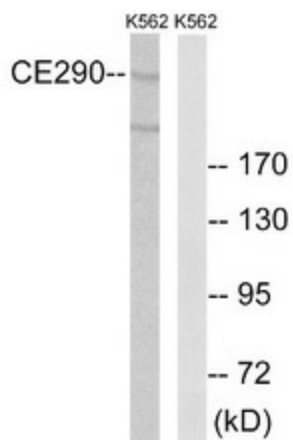
CEP290 Rabbit Polyclonal Antibody

Product data:

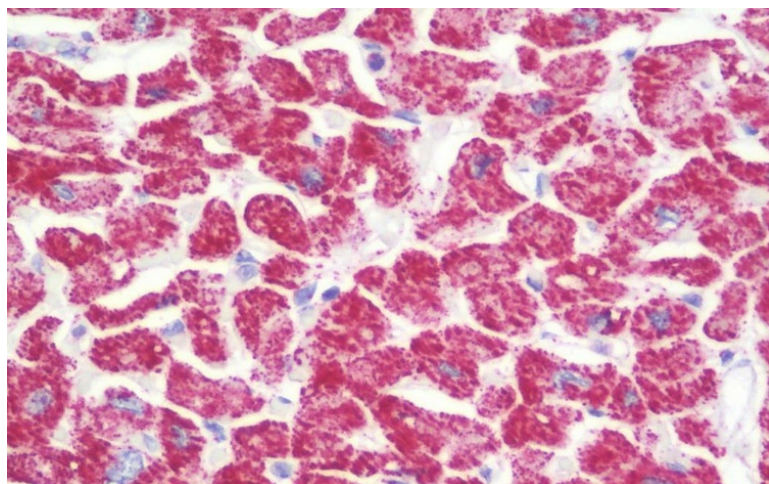
Product Type:	Primary Antibodies
Applications:	ELISA, IHC, WB
Recommended Dilution:	ELISA: 1/20000. Immunohistochemistry on Paraffin Sections: 1/100. Western Blot: 1/500 - 1/1000.
Reactivity:	Human, Mouse
Host:	Rabbit
Isotype:	IgG
Clonality:	Polyclonal
Immunogen:	Synthetic peptide derived from the internal (771-820) region of Human CEP290.
Specificity:	This antibody detects endogenous levels of total CEP290 protein.
Formulation:	PBS (without Mg ²⁺ and Ca ²⁺), pH 7.4, 150mM NaCl, 0.02% Sodium Azide and 50% Glycerol State: Aff - Purified State: Liquid purified IgG fraction
Concentration:	lot specific
Purification:	Immunoaffinity Chromatography
Conjugation:	Unconjugated
Storage:	Upon receipt, store undiluted (in aliquots) at -20°C. Avoid repeated freezing and thawing.
Stability:	Shelf life: one year from despatch.
Predicted Protein Size:	290 kDa
Gene Name:	centrosomal protein 290
Database Link:	Entrez Gene 80184 Human O15078
Synonyms:	Centrosomal protein of 290 kDa, Nephrocystin-6, KIAA0373, NPHP6, se2-2, CT87



[View online »](#)

Product images:

Western blot of extracts from K562 cells, using CEP290 Antibody. The lane on the right is treated with the synthesized peptide.



Formalin-Fixed, Paraffin-Embedded Human Pancreas stained with CEP290 Antibody.