

Product datasheet for **AP33216PU-N**

RPS27L (1-50) Rabbit Polyclonal Antibody

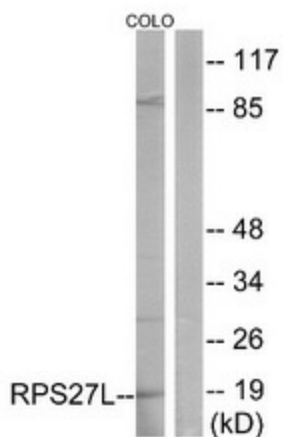
Product data:

Product Type:	Primary Antibodies
Applications:	ELISA, IHC, WB
Recommended Dilution:	ELISA: 1/10000. Immunohistochemistry on Paraffin Sections: 1/100. Western Blot: 1/500 - 1/1000.
Reactivity:	Human, Mouse
Host:	Rabbit
Isotype:	IgG
Clonality:	Polyclonal
Immunogen:	Synthetic peptide derived from N-terminal region of Human RPS27L (1-50)
Specificity:	This antibody detects endogenous levels of total RPS27L protein.
Formulation:	PBS (without Mg ²⁺ and Ca ²⁺), pH 7.4, 150mM NaCl, 0.02% Sodium Azide and 50% Glycerol State: Aff - Purified State: Liquid purified IgG fraction
Purification:	Immunoaffinity Chromatography
Conjugation:	Unconjugated
Storage:	Upon receipt, store undiluted (in aliquots) at -20°C. Avoid repeated freezing and thawing.
Stability:	Shelf life: one year from despatch.
Predicted Protein Size:	9 kDa
Gene Name:	ribosomal protein S27 like
Database Link:	Entrez Gene 51065 Human Q71UM5
Background:	RPS27L encodes a protein sharing 96% amino acid similarity with ribosomal protein S27, which suggests the encoded protein may be a component of the 40S ribosomal subunit.
Synonyms:	40S ribosomal protein S27-like

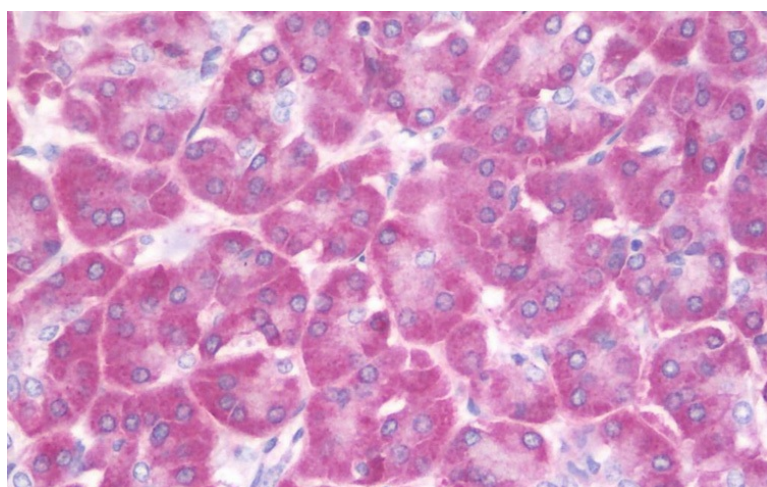


[View online »](#)

Product images:



Western blot analysis of extracts from COLO cells using RPS27L Antibody. The lane on the right is treated with the synthesized peptide.



Formalin-Fixed, Paraffin-Embedded Human Pancreas stained with RPS27L Antibody