

## Product datasheet for **AP33215PU-N**

### MRPL13 (C-term) Rabbit Polyclonal Antibody

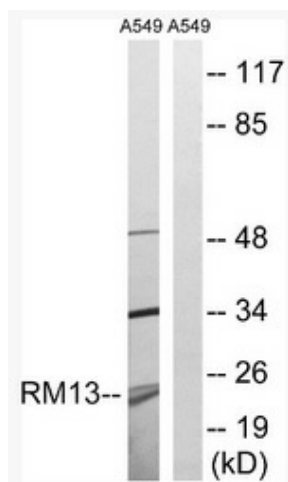
#### Product data:

Product Type:	Primary Antibodies
Applications:	ELISA, IHC, WB
Recommended Dilution:	<b>ELISA:</b> 1/40000. <b>Immunohistochemistry on Paraffin Sections:</b> 1/100. <b>Western Blot:</b> 1/500 - 1/1000.
Reactivity:	Human, Mouse, Rat
Host:	Rabbit
Isotype:	IgG
Clonality:	Polyclonal
Immunogen:	Synthetic peptide derived from C-terminal region of Human MRPL13.
Specificity:	This antibody detects endogenous levels of total MRPL13 protein.
Formulation:	PBS (without Mg <sup>2+</sup> and Ca <sup>2+</sup> ), pH 7.4, 150mM NaCl, 0.02% Sodium Azide and 50% Glycerol State: Aff - Purified State: Liquid purified IgG fraction
Concentration:	lot specific
Purification:	Immunoaffinity Chromatography
Conjugation:	Unconjugated
Storage:	Upon receipt, store undiluted (in aliquots) at -20°C. Avoid repeated freezing and thawing.
Stability:	Shelf life: one year from despatch.
Predicted Protein Size:	20 kDa
Gene Name:	mitochondrial ribosomal protein L13
Database Link:	<a href="#">Entrez Gene 28998 Human</a> <a href="#">Q9BYD1</a>
Synonyms:	L13mt, MRP-L13

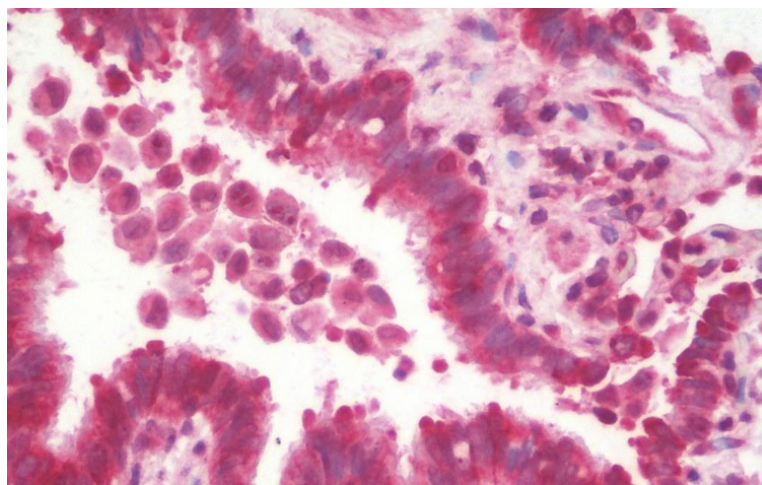


[View online »](#)

## Product images:



Western blot of extracts from A549 cells, using MRPL13 Antibody



Formalin-Fixed, Paraffin-Embedded Human Lung stained with MRPL13 Antibody