

## Product datasheet for **AP33112PU-N**

### RNF13 Isoforms 1+3 (C-term) Goat Polyclonal Antibody

#### Product data:

Product Type:	Primary Antibodies
Applications:	FC, IHC, PEP-ELISA, WB
Recommended Dilution:	<b>Peptide ELISA:</b> 1/1000 (Detection Limit). <b>Western Blot:</b> Detects a band of 60kDa in several Human tissues. <b>Immunohistochemistry on Paraffin Sections:</b> This antibody stained islets but not in ducts and acini of Human normal pancreas. However, in pancreatic ductal adenocarcinoma staining was in the ducts and acini.
Reactivity:	Bovine, Canine, Human, Mouse, Porcine, Rat
Host:	Goat
Clonality:	Polyclonal
Immunogen:	Synthetic peptide from the C-terminal of Human protein according to NP_009213
Specificity:	This antibody recognizes isoforms 1 and 3 of RNF13.
Formulation:	Tris saline, pH~7.3 State: Aff - Purified State: Liquid purified IgG fraction Stabilizer: 0.5% BSA Preservative: 0.02% Sodium Azide
Concentration:	lot specific
Purification:	Ammonium Sulphate Precipitation followed by Antigen Affinity Chromatography using the immunizing peptide
Conjugation:	Unconjugated
Storage:	Store undiluted at 2-8°C for one month or (in aliquots) at -20°C for longer. Avoid repeated freezing and thawing.
Stability:	Shelf life: one year from despatch.
Gene Name:	ring finger protein 13
Database Link:	<a href="#">Entrez Gene 11342 Human O43567</a>



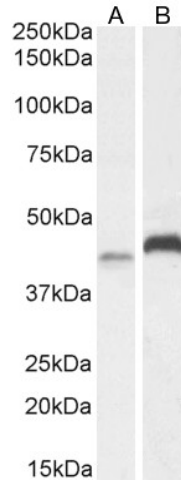
[View online »](#)

**Background:**

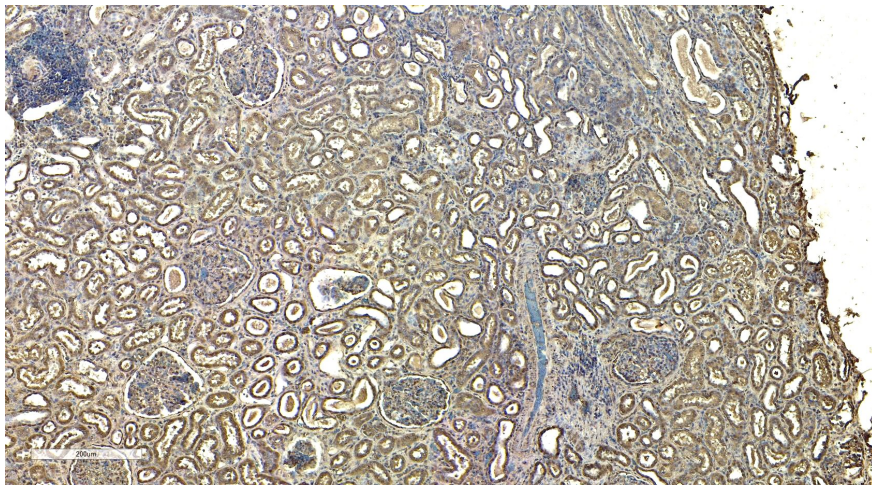
The protein encoded by this gene contains a RING zinc finger, a motif known to be involved in protein-protein interactions. The specific function of this gene has not yet been determined. Alternatively spliced transcript variants that encode the same protein have been reported. A pseudogene, which is also located on chromosome 3, has been defined for this gene. [provided by RefSeq]

**Synonyms:**

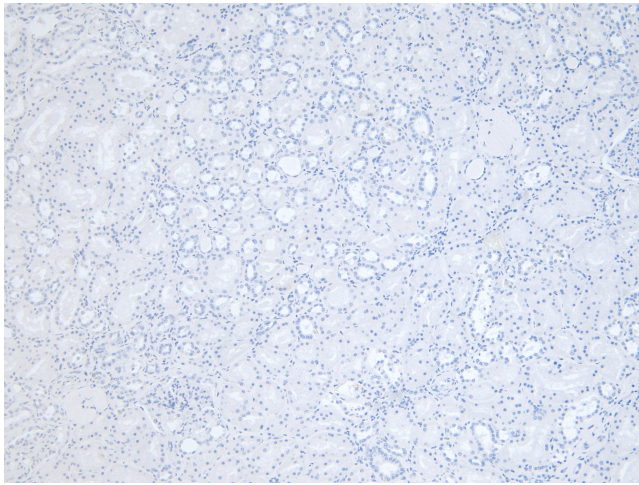
RING finger protein 13

**Product images:**


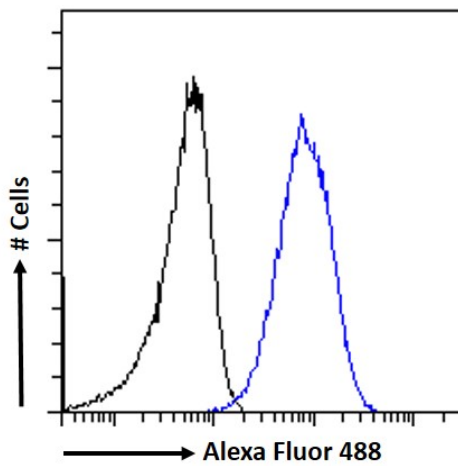
AP33112PU-N (2 $\mu$ g/ml) staining of A431 (A) and HeLa (B) cell lysate (35 $\mu$ g protein in RIPA buffer). Detected by chemiluminescence.



AP33112PU-N (5 $\mu$ g/ml) staining of paraffin embedded Human Kidney. Heat induced antigen retrieval with citrate buffer pH 6, HRP-staining.



AP33112PU-N Negative Control showing staining of paraffin embedded Human Kidney, with no primary antibody.



AP33112PU-N Flow cytometric analysis of paraformaldehyde fixed A431 cells (blue line), permeabilized with 0.5% Triton. Primary incubation 1hr (10ug/ml) followed by Alexa Fluor 488 secondary antibody (1ug/ml). IgG control: Unimmunized goat IgG (black line) followed by Alexa Fluor 488 secondary antibody.