

## Product datasheet for **AP33007PU-N**

### stabilin1 (STAB1) (C-term) Goat Polyclonal Antibody

#### Product data:

Product Type:	Primary Antibodies
Applications:	ELISA, IHC
Recommended Dilution:	<b>Peptide ELISA:</b> 1/8000 (Detection Limit). <b>Immunohistochemistry on Paraffin Sections:</b> 3-5 µg/ml. In paraffin embedded Human Spleen shows endothelial staining.
Reactivity:	Bovine, Canine, Human, Porcine
Host:	Goat
Clonality:	Polyclonal
Immunogen:	Peptide with sequence C-DFPDTQRILTVK, from the C Terminus of the protein sequence according to NP_055951.2.
Specificity:	This antibody recognizes Stabilin-1 at C-term.
Formulation:	Tris saline, pH~7.3 State: Aff - Purified State: Liquid purified Ig fraction Stabilizer: 0.5% BSA Preservative: 0.02% Sodium Azide
Concentration:	lot specific
Purification:	Antigen Affinity Chromatography
Conjugation:	Unconjugated
Storage:	Store undiluted at 2-8°C for one month or (in aliquots) at -20°C for longer. Avoid repeated freezing and thawing.
Stability:	Shelf life: one year from despatch.
Gene Name:	stabilin 1
Database Link:	<a href="#">Entrez Gene 23166 Human Q9NY15</a>



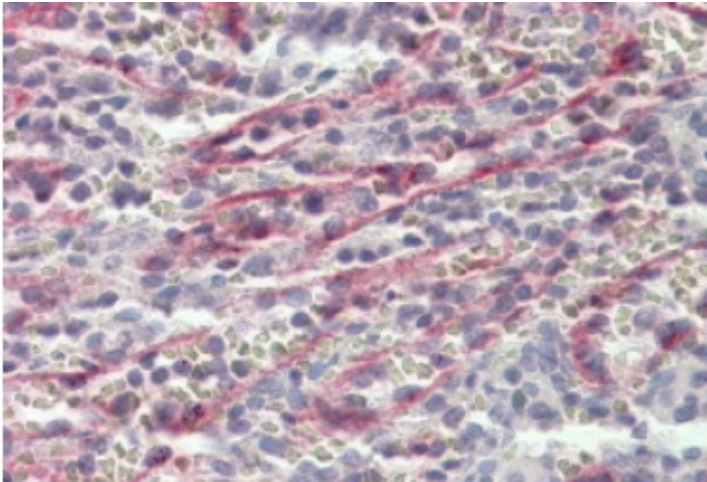
[View online »](#)

**Background:**

Stabilin-1 is a large transmembrane receptor protein which may function in angiogenesis, lymphocyte homing, cell adhesion, or receptor scavenging. The protein contains 7 fasciclin, 16 epidermal growth factor (EGF)-like, and 2 laminin-type EGF-like domains as well as a C-type lectin-like hyaluronan-binding Link module. The protein is primarily expressed on sinusoidal endothelial cells of liver, spleen, and lymph node. The receptor has been shown to endocytose ligands such as low density lipoprotein, Gram-positive and Gram-negative bacteria, and advanced glycosylation end products. Supporting its possible role as a scavenger receptor, the protein rapidly cycles between the plasma membrane and early endosomes (Entrez gene 23166). Cellular localization: Membrane; Single-pass type I membrane protein.

**Synonyms:**

Stabilin-1, FEEL1, FEEL-1, CLEVER-1, KIAA0246

**Product images:**

Staining of paraffin embedded Human Spleen using Stabilin 1 Antibody at 3.8 ug/ml. Steamed antigen retrieval with citrate buffer pH 6, AP-staining.