

## Product datasheet for **AP33005PU-N**

### **BAT3 (BAG6) Goat Polyclonal Antibody**

#### **Product data:**

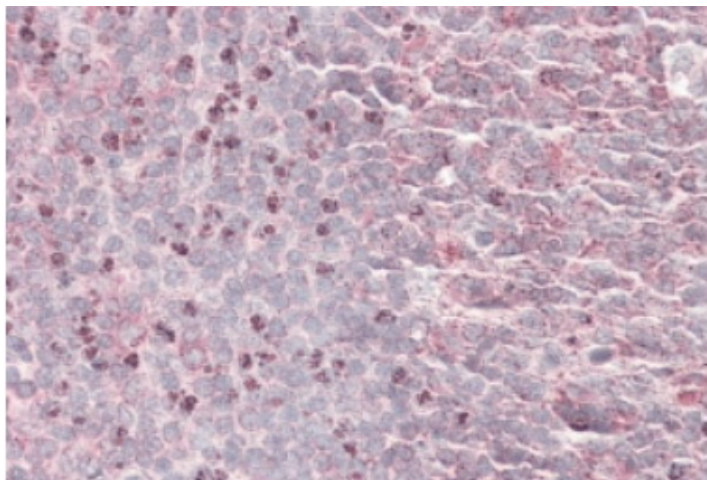
Product Type:	Primary Antibodies
Applications:	ELISA, IHC
Recommended Dilution:	<b>Peptide ELISA:</b> 1/128000 (Detection Limit). <b>Western blot:</b> Preliminary experiments in Human Brain (Frontal Cortex) and Human Ovary lysates gave no specific signal but low background (at antibody concentration up to 1 µg/ml). <b>Immunohistochemistry on Paraffin Sections:</b> 3-5 µg/ml. In paraffin embedded Human Spleen shows nucleoli staining in splenocytes.
Reactivity:	Bovine, Canine, Human, Mouse, Rat
Host:	Goat
Clonality:	Polyclonal
Immunogen:	Peptide with sequence C-PETNAPNHPSPA EY, from the internal region of the protein sequence according to NP_004630.3; NP_542433.1.
Specificity:	This antibody is expected to recognize both reported isoforms (NP_004630.3; NP_542433.1). Reported variants representing identical protein: NP_542434.1, NP_001092004.1, NP_542433.1 (isoform b).
Formulation:	Tris saline, pH~7.3 State: Aff - Purified State: Liquid purified Ig fraction Stabilizer: 0.5% BSA Preservative: 0.02% Sodium Azide
Concentration:	lot specific
Purification:	Antigen Affinity Chromatography
Conjugation:	Unconjugated
Storage:	Store undiluted at 2-8°C for one month or (in aliquots) at -20°C for longer. Avoid repeated freezing and thawing.
Stability:	Shelf life: one year from despatch.
Gene Name:	BCL2 associated athanogene 6
Database Link:	<a href="#">Entrez Gene 7917 Human P46379</a>



[View online »](#)

Synonyms: Protein G3, D6S52E

### Product images:



BAT3 Antibody (3.8ug/ml) staining of paraffin embedded Human Spleen. Steamed antigen retrieval with citrate buffer pH 6, AP-staining.