

Product datasheet for **AP32982SU-N**

MAPT / TAU Chicken Polyclonal Antibody

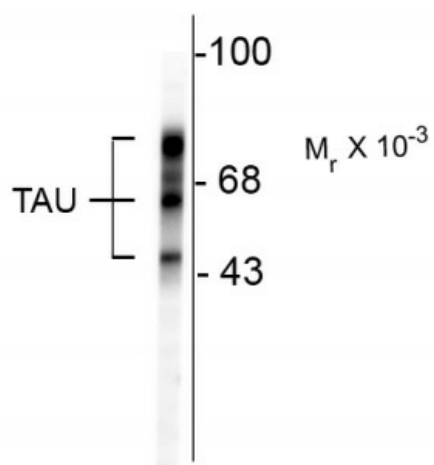
Product data:

Product Type:	Primary Antibodies
Applications:	IF, IHC, WB
Recommended Dilution:	Western blotting: 1/10,000. Immunohistochemistry. Immunofluorescence: 1/1000.
Reactivity:	Human, Rat
Host:	Chicken
Isotype:	IgY
Clonality:	Polyclonal
Immunogen:	Recombinant full length Human Tau expressed in and purified from <i>E. coli</i> .
Specificity:	Specific for the ~48, 65 & 75kDa Tau isoforms.
Formulation:	State: Ig Fraction State: Liquid Total IgY fraction Preservative: 10 mM Sodium Azide
Conjugation:	Unconjugated
Storage:	Store the antibody undiluted (in aliquots) at -20°C. Avoid repeated freezing and thawing.
Stability:	Shelf life: one year from despatch.
Gene Name:	microtubule associated protein tau
Database Link:	Entrez Gene 4137 Human P10636
Background:	Tau is a key microtubule-associated protein that plays an important role in the formation of microtubules in axons (Binder et al. 1985). Six tau isoforms have been identified as products of a single gene produced by alternative mRNA splicing (Goedert 1990). Tau mutations have been implicated in many neurodegenerative disorders such as Alzheimer's disease (AD), Pick's disease and progressive supranuclear palsy.
Synonyms:	MAPTL, MTBT1, Microtubule-associated protein tau, PHF-tau, Neurofibrillary tangle protein, Paired helical filament-tau

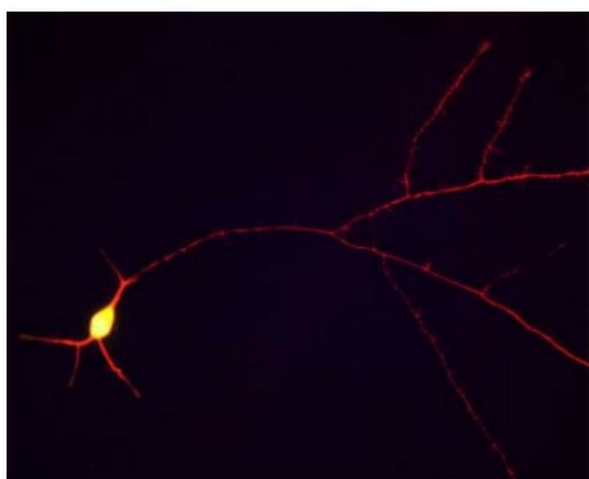


[View online »](#)

Product images:



Western blot of rat cortex lysate showing specific immunolabeling of the ~48, 65 & 75kda tau isoforms.



Immunofluorescence of cultured rat hippocampal neurons showing staining of Tau in red along the neuronal processes.