

## Product datasheet for **AP32978PU-N**

### **GPR48 (LGR4) Rat Monoclonal Antibody [Clone ID: BBX-1H1]**

#### **Product data:**

Product Type:	Primary Antibodies
Clone Name:	BBX-1H1
Applications:	ELISA, FC, WB
Recommended Dilution:	<b>Flow Cytometry:</b> 1.2 µg/10 <sup>6</sup> cells. <b>Cell based ELISA</b> with intact, transiently transfected cells: 1/200-1/400.
Reactivity:	Human
Host:	Rat
Isotype:	IgG2a
Clonality:	Monoclonal
Immunogen:	cDNA encoding Human LGR4
Specificity:	Recognizes Human LGR4 / GPR48. <b>Selection:</b> Based on recognition of the complete native protein expressed on transfected mammalian cells.
Formulation:	PBS, pH 7.2 State: Purified State: Liquid purified IgG fraction
Concentration:	lot specific
Purification:	Affinity Chromatography on Protein G
Conjugation:	Unconjugated
Storage:	Store undiluted at 2-8°C for one month or (in aliquots) at -20°C for longer. Avoid repeated freezing and thawing.
Stability:	Shelf life: one year from despatch.
Gene Name:	leucine-rich repeat containing G protein-coupled receptor 4
Database Link:	<a href="#">Entrez Gene 55366 Human Q9BXB1</a>



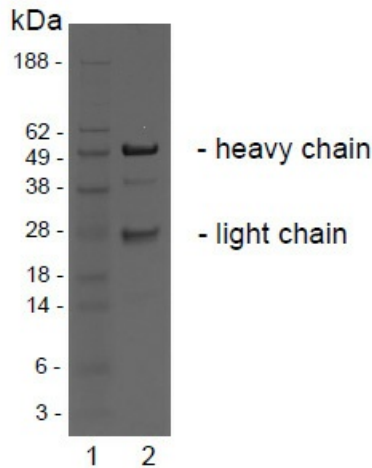
[View online »](#)

**Background:**

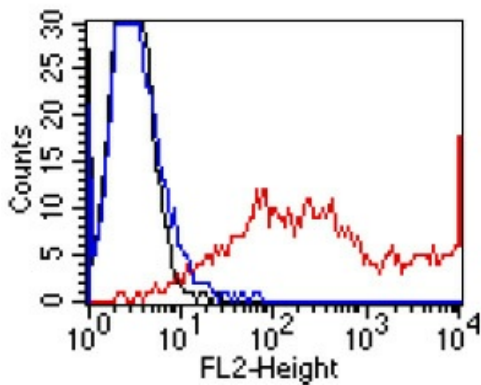
LGR4 (Leucine-rich repeat- containing G protein-coupled receptor 4) belongs to the superfamily of G protein-coupled receptors (GPCRs). It is a 951 amino acid multi-pass membrane protein and has multiple N-terminal leucine-rich repeats, which are important for interaction with the glycoprotein ligands, and 7 transmembrane domains (1,3). LGR4 is highly expressed in the adult human pancreas but also with moderate levels of expression in placenta, kidney, brain and heart (2). LGR4 functions as an orphan receptor that may be involved in physiologic activities throughout the cell. It is overexpressed in various cancer types and is thought to enhance carcinoma invasiveness and metastasis, suggesting an important role in tumor progression.

**Synonyms:**

G-protein coupled receptor 48

**Product images:**


SDS-PAGE analysis of purified BBX-1H1 monoclonal antibody. Lane 1: molecular weight marker, Lane 2: 2 ug of purified BBX-1H1 antibody. Proteins were separated by SDS-PAGE and stained with RAPID Stain™ Reagent.



- control transfectant
- LGR4 hum transfectant
- LGR4 murine transfectant

FACS analysis of BOSC23 cells using BBX-1H1. BOSC23 cells were transiently transfected with an expression vector encoding either LGR4-hum (red curve), LGR4-murine (blue curve) or an irrelevant protein (control transfectant: black curve). Binding of BBX-3A8 was detected with a PE-conjugated secondary antibody. A positive signal was obtained only with LGR4-hum transfected cells.