

Product datasheet for **AP32973PU-N**

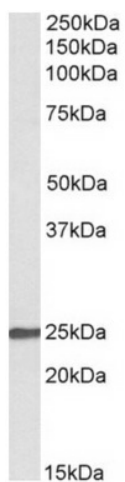
NBL1 (21-32) Goat Polyclonal Antibody

Product data:

Product Type:	Primary Antibodies
Applications:	WB
Recommended Dilution:	Peptide ELISA: 1/128000 (Detection Limit). Western blot: 0.1-0.3 µg/ml. Approx 25kDa band observed in lysates of cell line Kelly (calculated MW of 23.2kDa according to NP_877421.2).
Reactivity:	Human
Host:	Goat
Clonality:	Polyclonal
Immunogen:	Peptide with sequence from the internal region of the protein sequence according to NP_877421.2.
Specificity:	This antibody is expected to recognize isoform 1 of NBL1 (NP_877421.2) only.
Formulation:	Tris saline, pH~7.3 State: Aff - Purified State: Liquid purified Ig fraction Stabilizer: 0.5% BSA Preservative: 0.02% Sodium Azide
Concentration:	lot specific
Purification:	Ammonium Sulphate Precipitation followed by Antigen Affinity Chromatography using the immunizing peptide
Conjugation:	Unconjugated
Storage:	Store undiluted at 2-8°C for one month or (in aliquots) at -20°C for longer. Avoid repeated freezing and thawing.
Stability:	Shelf life: one year from despatch.
Gene Name:	neuroblastoma 1, DAN family BMP antagonist
Database Link:	Entrez Gene 4681 Human P41271
Synonyms:	DAN, DAND1
Protein Families:	Secreted Protein



[View online »](#)

Product images:

AP32973PU-N (0.1g/ml) staining of Kelly lysate (35g protein in RIPA buffer). Primary incubation was 1 hour. Detected by chemiluminescence.