

## Product datasheet for **AP32970PU-N**

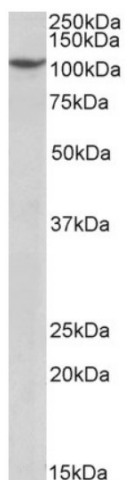
### ANT 1 (PRPF6) Goat Polyclonal Antibody

#### Product data:

Product Type:	Primary Antibodies
Applications:	WB
Recommended Dilution:	<b>Peptide ELISA:</b> 1/16000 (Detection Limit). <b>Western blot:</b> 1-3 µg/ml. Approx 110kDa band observed in nuclear lysates of cell line Jurkat (calculated MW of 107kDa according to NP_036601.2).
Reactivity:	Bovine, Canine, Human, Mouse, Rat
Host:	Goat
Clonality:	Polyclonal
Immunogen:	Peptide with sequence from the Internal region of the protein sequence according to NP_036601.2.
Specificity:	This antibody recognizes PRPF6.
Formulation:	Tris saline, pH~7.3 State: Aff - Purified State: Liquid purified Ig fraction Stabilizer: 0.5% BSA Preservative: 0.02% Sodium Azide
Concentration:	lot specific
Purification:	Ammonium Sulphate Precipitation followed by Antigen Affinity Chromatography using the immunizing peptide
Conjugation:	Unconjugated
Storage:	Store undiluted at 2-8°C for one month or (in aliquots) at -20°C for longer. Avoid repeated freezing and thawing.
Stability:	Shelf life: one year from despatch.
Gene Name:	pre-mRNA processing factor 6
Database Link:	<a href="#">Entrez Gene 24148 Human O94906</a>
Synonyms:	U5-102 kDa protein, PRP6 homolog, C20orf14, ANT-1, TOM



[View online »](#)

**Product images:**

(1ug/ml) staining of Jurkat nuclear lysate (35ug protein in RIPA buffer). Primary incubation was 1 hour. Detected by chemiluminescence.