

## Product datasheet for **AP32969PU-N**

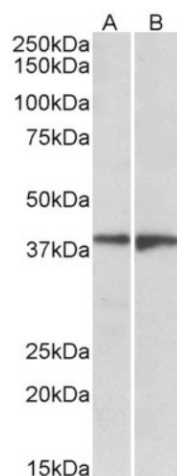
### EDG8 (S1PR5) Goat Polyclonal Antibody

#### Product data:

Product Type:	Primary Antibodies
Applications:	WB
Recommended Dilution:	<b>Peptide ELISA:</b> 1/2000 (Detection Limit). <b>Western blot:</b> 1-3 µg/ml. Approx 38kDa band observed in Human Brain (Frontal Cortex and Amygdala) lysates (calculated MW of 41.8kDa according to NP_110387.1).
Reactivity:	Bovine, Human, Porcine
Host:	Goat
Clonality:	Polyclonal
Immunogen:	Peptide with sequence from the internal region (near C Terminus) of the protein sequence according to NP_110387.1.
Specificity:	This antibody recognizes EDG8 / SPPR1.
Formulation:	Tris saline, pH~7.3 State: Aff - Purified State: Liquid purified Ig fraction Stabilizer: 0.5% BSA Preservative: 0.02% Sodium Azide
Concentration:	lot specific
Purification:	Ammonium Sulphate Precipitation followed by Antigen Affinity Chromatography using the immunizing peptide
Conjugation:	Unconjugated
Storage:	Store undiluted at 2-8°C for one month or (in aliquots) at -20°C for longer. Avoid repeated freezing and thawing.
Stability:	Shelf life: one year from despatch.
Gene Name:	sphingosine-1-phosphate receptor 5
Database Link:	<a href="#">Entrez Gene 53637 Human Q9H228</a>
Synonyms:	S1P receptor 5, EDG8, SPPR-1, SPPR-2, S1PR5



[View online »](#)

**Product images:**

(1ug/ml) staining of Human Frontal Cortex (A) and Amygdala (B) lysates (35ug protein in RIPA buffer). Primary incubation was 1 hour. Detected by chemiluminescence.