

Product datasheet for **AP32967PU-N**

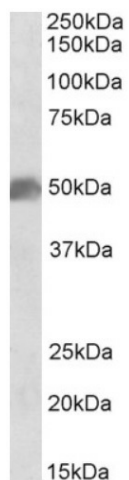
SOX10 Goat Polyclonal Antibody

Product data:

Product Type:	Primary Antibodies
Applications:	WB
Recommended Dilution:	Peptide ELISA: 1/128000 (Detection Limit). Western blot: 0.03-0.1 µg/ml. Primary incubation 1 hour at room temperature. Approx 50kDa band observed in Human Brain (Cerebellum) and approx. 52kDa in Mouse Brain lysates (calculated MW of 49.9kDa according to Human NP_008872.1 and Mouse NP_035567.1).
Reactivity:	Bovine, Canine, Human, Mouse, Porcine, Rat
Host:	Goat
Clonality:	Polyclonal
Immunogen:	Peptide with sequence from the internal region of the protein sequence according to NP_008872.1.
Specificity:	This antibody recognizes SOX10.
Formulation:	Tris saline, pH~7.3 State: Aff - Purified State: Liquid purified Ig fraction Stabilizer: 0.5% BSA Preservative: 0.02% Sodium Azide
Concentration:	lot specific
Purification:	Ammonium Sulphate Precipitation followed by Antigen Affinity Chromatography using the immunizing peptide
Conjugation:	Unconjugated
Storage:	Store undiluted at 2-8°C for one month or (in aliquots) at -20°C for longer. Avoid repeated freezing and thawing.
Stability:	Shelf life: one year from despatch.
Gene Name:	SRY-box 10
Database Link:	Entrez Gene 6663 Human P56693
Synonyms:	Transcription factor SOX-10, SRY-box 10, DOM



[View online »](#)

Product images:

(0.1 ug/ml) staining of Human Cerebellum lysate (35ug protein in RIPA buffer). Primary incubation was 1 hour. Detected by chemiluminescence.