

## Product datasheet for **AP32963PU-N**

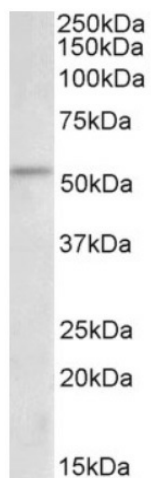
### Chk1 (CHEK1) Goat Polyclonal Antibody

#### Product data:

Product Type:	Primary Antibodies
Applications:	WB
Recommended Dilution:	<b>Peptide ELISA:</b> 1/32000 (Detection Limit). <b>Western blot:</b> 1-3 µg/ml. Approx 50kDa band observed in Rat Thymus lysates (calculated MW of 54.4kDa according to Rat NP_536325.1).
Reactivity:	Bovine, Human, Mouse, Rat
Host:	Goat
Clonality:	Polyclonal
Immunogen:	Peptide with sequence from the internal region of the protein sequence according to NP_001265.1.
Specificity:	Recognizes CHEK1.
Formulation:	Tris saline, pH~7.3 State: Aff - Purified State: Liquid purified Ig fraction Stabilizer: 0.5% BSA Preservative: 0.02% Sodium Azide
Concentration:	lot specific
Purification:	Ammonium Sulphate Precipitation followed by Antigen Affinity Chromatography using the immunizing peptide
Conjugation:	Unconjugated
Storage:	Store undiluted at 2-8°C for one month or (in aliquots) at -20°C for longer. Avoid repeated freezing and thawing.
Stability:	Shelf life: one year from despatch.
Gene Name:	checkpoint kinase 1
Database Link:	<a href="#">Entrez Gene 1111 Human O14757</a>
Synonyms:	CHEK1, CHEK-1



[View online »](#)

**Product images:**

(2ug/ml) staining of Rat Thymus lysate (35ug protein in RIPA buffer). Primary incubation was 1 hour. Detected by chemiluminescence.