

Product datasheet for **AP32962PU-N**

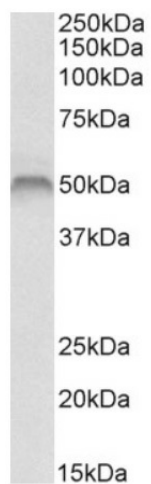
Fascin (FSCN1) Goat Polyclonal Antibody

Product data:

Product Type:	Primary Antibodies
Applications:	WB
Recommended Dilution:	Peptide ELISA: 1/4000 (Detection Limit). Western blot: 1-3 µg/ml. Approx 50kDa band observed in Human Skeletal Muscle lysates (calculated MW of 54.5kDa according to NP_003079.1).
Reactivity:	Bovine, Human, Mouse, Rat
Host:	Goat
Clonality:	Polyclonal
Immunogen:	Peptide with sequence RDTKKCAFRTHT, from the internal region of the protein sequence according to NP_003079.1.
Specificity:	Recognizes FSCN1.
Formulation:	Tris saline, pH~7.3 State: Aff - Purified State: Liquid purified Ig fraction Stabilizer: 0.5% BSA Preservative: 0.02% Sodium Azide
Concentration:	lot specific
Purification:	Ammonium Sulphate Precipitation followed by Antigen Affinity Chromatography using the immunizing peptide
Conjugation:	Unconjugated
Storage:	Store undiluted at 2-8°C for one month or (in aliquots) at -20°C for longer. Avoid repeated freezing and thawing.
Stability:	Shelf life: one year from despatch.
Database Link:	Entrez Gene 6624 Human Q16658
Synonyms:	SCN1, FAN1, HSN, SNL, p55, Singed-like protein, Dendritic cell marker



[View online »](#)

Product images:

(1ug/ml) staining of Human Skeletal Muscle lysate (35ug protein in RIPA buffer). Primary incubation was 1 hour. Detected by chemiluminescence.