

Product datasheet for **AP32961PU-N**

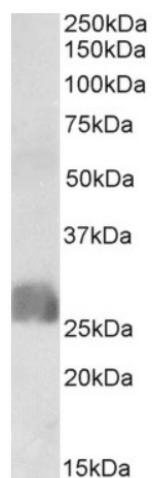
CREB3L2 (N-term) Goat Polyclonal Antibody

Product data:

Product Type:	Primary Antibodies
Applications:	WB
Recommended Dilution:	Peptide ELISA: 1/16000 (Detection Limit). Western blot: 1-3 µg/ml. Approx 26kDa band observed in Human Placenta lysates (calculated MW of 27.7kDa according to NP_001240704.1).
Reactivity:	Human
Host:	Goat
Clonality:	Polyclonal
Immunogen:	Peptide with sequence from the N-Terminus of the protein sequence according to NP_919047.2; NP_001240704.1.
Specificity:	This antibody is expected to recognize both reported isoforms of CREB3L2 (NP_919047.2; NP_001240704.1).
Formulation:	Tris saline, pH~7.3 State: Aff - Purified State: Liquid purified Ig fraction Stabilizer: 0.5% BSA Preservative: 0.02% Sodium Azide
Concentration:	lot specific
Purification:	Ammonium Sulphate Precipitation followed by Antigen Affinity Chromatography using the immunizing peptide
Conjugation:	Unconjugated
Storage:	Store undiluted at 2-8°C for one month or (in aliquots) at -20°C for longer. Avoid repeated freezing and thawing.
Stability:	Shelf life: one year from despatch.
Gene Name:	cAMP responsive element binding protein 3-like 2
Database Link:	Entrez Gene 64764 Human Q70SY1
Synonyms:	BBF2H7



[View online »](#)

Product images:

(1ug/ml) staining of Human Placenta lysate (35ug protein in RIPA buffer). Primary incubation was 1 hour. Detected by chemiluminescence.