

## Product datasheet for **AP32960PU-N**

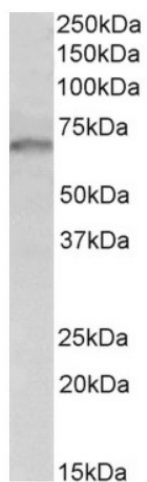
### GRB10 Goat Polyclonal Antibody

#### Product data:

Product Type:	Primary Antibodies
Applications:	WB
Recommended Dilution:	<b>Peptide ELISA:</b> 1/128000 (Detection Limit). <b>Western blot:</b> 1-3 µg/ml. Approx 70kDa band observed in lysates of cell line HeLa (calculated MW of 67.2kDa according to NP_005302.3).
Reactivity:	Human
Host:	Goat
Clonality:	Polyclonal
Immunogen:	Peptide with sequence from the internal region of the protein sequence according to NP_005302.3; NP_001001549.1.
Specificity:	This antibody is expected to recognise the reported isoforms of GRB10 (NP_005302.3; NP_001001549.1).
Formulation:	Tris saline, pH~7.3 State: Aff - Purified State: Liquid purified Ig fraction Stabilizer: 0.5% BSA Preservative: 0.02% Sodium Azide
Concentration:	lot specific
Purification:	Ammonium Sulphate Precipitation followed by Antigen Affinity Chromatography using the immunizing peptide
Conjugation:	Unconjugated
Storage:	Store undiluted at 2-8°C for one month or (in aliquots) at -20°C for longer. Avoid repeated freezing and thawing.
Stability:	Shelf life: one year from despatch.
Gene Name:	growth factor receptor bound protein 10
Database Link:	<a href="#">Entrez Gene 2887 Human Q13322</a>
Synonyms:	Grb-IR, KIAA0207



[View online »](#)

**Product images:**

(1ug/ml) staining of HeLa lysate (35ug protein in RIPA buffer). Primary incubation was 1 hour. Detected by chemiluminescence.