

## Product datasheet for **AP32958PU-N**

### HOXC6 (isoform 1) Goat Polyclonal Antibody

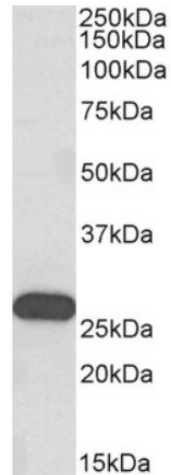
#### Product data:

Product Type:	Primary Antibodies
Applications:	IHC, WB
Recommended Dilution:	<b>Peptide ELISA:</b> 1/128000 (Detection Limit). <b>Western blot:</b> 0.3-0.1 µg/ml. Approx 26kDa band observed in Human Brain (Olfactory bulb) and Rat Brain lysates (calculated MW of 26.9kDa according to NP_004494.1).
Reactivity:	Bovine, Canine, Human, Mouse, Porcine, Rat
Host:	Goat
Clonality:	Polyclonal
Immunogen:	Peptide with sequence from the internal region (near N-Terminus) of the protein sequence according to NP_004494.1.
Specificity:	This antibody is expected to recognize HOXC6 isoform 1 (NP_004494.1) only.
Formulation:	Tris saline, pH~7.3 State: Aff - Purified State: Liquid purified Ig fraction Stabilizer: 0.5% BSA Preservative: 0.02% Sodium Azide
Concentration:	lot specific
Purification:	Ammonium Sulphate Precipitation followed by Antigen Affinity Chromatography using the immunizing peptide
Conjugation:	Unconjugated
Storage:	Store undiluted at 2-8°C for one month or (in aliquots) at -20°C for longer. Avoid repeated freezing and thawing.
Stability:	Shelf life: one year from despatch.
Gene Name:	homeobox C6
Database Link:	<a href="#">Entrez Gene 3223 Human P09630</a>
Synonyms:	Homeobox protein Hox-C6, Hox-3C, HHO.C8, CP25

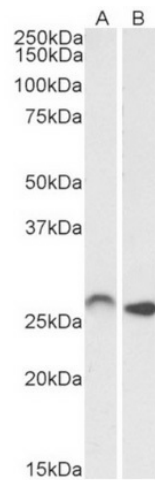


[View online »](#)

## Product images:



HOXC6 Antibody (0.3ug/ml) staining of Human Olfactory bulb lysate (35ug protein in RIPA buffer). Primary incubation was 1 hour. Detected by chemiluminescence.



HOXC6 Antibody (0.01ug/ml) staining of Mouse (A) and Rat (B) Brain lysates (35ug protein in RIPA buffer). Primary incubation was 1 hour. Detected by chemiluminescence.