

Product datasheet for **AP32950PU-N**

DMTF1 (629-642) Goat Polyclonal Antibody

Product data:

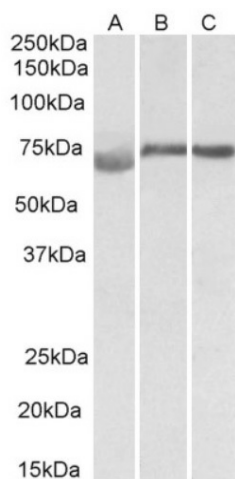
Product Type:	Primary Antibodies
Applications:	ELISA, WB
Recommended Dilution:	Peptide ELISA: 1/8000 (Detection Limit). Western blot: 1-3 µg/ml. Approx 70-75kDa band observed in Human, Mouse and Rat Testis lysates (calculated MW of 74.9kDa according to NP_001135799.1).
Reactivity:	Bovine, Canine, Human, Mouse, Porcine
Host:	Goat
Clonality:	Polyclonal
Immunogen:	Peptide with sequence from the internal region of the protein sequence according to NP_066968.3; NP_001135798.1.
Specificity:	This antibody is expected to recognize both reported isoforms (NP_066968.3; NP_001135798.1). Reported variants represent identical protein: NP_066968.3, NP_001135799.1
Formulation:	Tris saline, pH~7.3 State: Aff - Purified State: Liquid purified IgG fraction Stabilizer: 0.5% BSA Preservative: 0.02% Sodium Azide
Concentration:	lot specific
Purification:	Ammonium Sulphate precipitation followed by Antigen Affinity Chromatography using the immunizing peptide
Conjugation:	Unconjugated
Storage:	Store undiluted at 2-8°C for one month or (in aliquots) at -20°C for longer. Avoid repeated freezing and thawing.
Stability:	Shelf life: one year from despatch.
Gene Name:	cyclin D binding myb like transcription factor 1
Database Link:	Entrez Gene 9988 Human Q9Y222



[View online »](#)

Synonyms: DMP1; DMTF; FLJ25188; FLJ41265; FLJ76054; hDMP1; hDMTF1; OTTHUMP00000205131

Product images:



(1 ug/ml) staining of Human (A), Mouse (B) and Rat (C) Testis lysate (35ug protein in RIPA buffer). Primary incubation was 1 hour. Detected by chemiluminescence.