

Product datasheet for **AP32947PU-N**

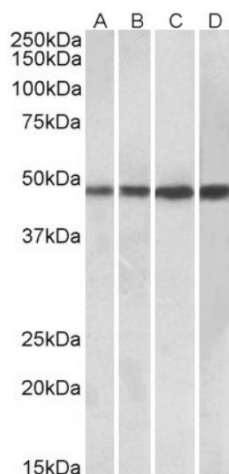
BEN Domain Containing Protein 5 (BEND5) (C-term) Goat Polyclonal Antibody

Product data:

Product Type:	Primary Antibodies
Applications:	ELISA, WB
Recommended Dilution:	Peptide ELISA: 1/128000 (Detection Limit). Western blot: 0.3-1 µg/ml. Approx 48kDa band observed in Human Tonsil and Spleen and Mouse Spleen lysates and also in lysates of cell line Daudi (calculated MW of 48.2kDa according to NP_078879.2).
Reactivity:	Bovine, Canine, Human, Mouse, Rat
Host:	Goat
Clonality:	Polyclonal
Immunogen:	Peptide with sequence from the C-Terminus of the protein sequence according to NP_078879.2.
Specificity:	This antibody recognizes BEND5(C-term).
Formulation:	Tris saline, pH~7.3 State: Aff - Purified State: Liquid purified IgG fraction Stabilizer: 0.5% BSA Preservative: 0.02% Sodium Azide
Concentration:	lot specific
Purification:	Ammonium Sulphate precipitation followed by Antigen Affinity Chromatography using the immunizing peptide
Conjugation:	Unconjugated
Storage:	Store undiluted at 2-8°C for one month or (in aliquots) at -20°C for longer. Avoid repeated freezing and thawing.
Stability:	Shelf life: one year from despatch.
Gene Name:	BEN domain containing 5
Database Link:	Entrez Gene 79656 Human Q7L4P6
Synonyms:	BEN domain-containing protein 5, C1orf165



[View online »](#)

Product images:

(0.3 ug/ml) staining of Daudi (A), Human Tonsil (B), Human Spleen (C) and Mouse Spleen (D) lysates (35ug protein in RIPA buffer). Primary incubation was 1 hour. Detected by chemiluminescence.