

Product datasheet for **AP32928PU-N**

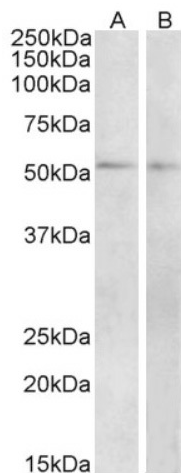
Vipr1 Goat Polyclonal Antibody

Product data:

Product Type:	Primary Antibodies
Applications:	ELISA, WB
Recommended Dilution:	Peptide ELISA: 1/1000 (Detection Limit). Western Blot: 1-3 µg/ml. Approx 52kDa band observed in Mouse and Rat Small Intestine lysates (calculated MW of 52.1kDa according to NP_035833.2).
Reactivity:	Mouse, Rat
Host:	Goat
Clonality:	Polyclonal
Immunogen:	Peptide with sequence from the internal region of the protein sequence according to NP_035833.2.
Specificity:	This antibody recognizes Mouse and Rat Vipr1. Other species not tested.
Formulation:	Tris saline, pH~7.3 State: Aff - Purified State: Liquid purified Ig fraction Stabilizer: 0.5% BSA Preservative: 0.02% Sodium Azide
Concentration:	lot specific
Purification:	Ammonium Sulfate Precipitation followed by Antigen Affinity Chromatography using the immunizing peptide
Conjugation:	Unconjugated
Storage:	Store undiluted at 2-8°C for one month or (in aliquots) at -20°C for longer. Avoid repeated freezing and thawing.
Stability:	Shelf life: one year from despatch.
Gene Name:	vasoactive intestinal peptide receptor 1
Database Link:	Entrez Gene 22354 Mouse P97751
Synonyms:	Vasoactive intestinal polypeptide receptor 1, VIPR1, PACAPR2, PACAP-R-2, VIP-R1, VIPR-1



[View online »](#)

Product images:

(2ug/ml) staining of Mouse (A) and Rat (B) Small Intestine lysate (35ug protein in RIPA buffer). Primary incubation was 1 hour. Detected by chemiluminescence.