

Product datasheet for **AP32926PU-N**

CFC1 Goat Polyclonal Antibody

Product data:

Product Type:	Primary Antibodies
Applications:	ELISA, IHC
Recommended Dilution:	Peptide ELISA: 1/32000 (Detection Limit). Western Blot: Preliminary experiments gave an approx 55kDa band in Human Breast, Placenta and Testis lysates after 0.1µg/ml antibody staining. Please note that currently we cannot find an explanation in the literature for the band we observe given the calculated size of 24.6kDa according to NP_115934.1. The 55kDa band was successfully blocked by incubation with the immunizing peptide. Immunohistochemistry on Paraffin Sections: 1-2 µg/ml. In paraffin embedded Mouse Embryonic Liver shows staining of the hepatocyte cell membranes.
Reactivity:	Human, Mouse, Rat
Host:	Goat
Clonality:	Polyclonal
Immunogen:	Peptide with sequence from the internal region of the protein sequence according to NP_115934.1.
Specificity:	This antibody recognizes CFC1 / Cripto-1.
Formulation:	Tris saline, pH~7.3 State: Aff - Purified State: Liquid purified Ig fraction Stabilizer: 0.5% BSA Preservative: 0.02% Sodium Azide
Concentration:	lot specific
Purification:	Ammonium Sulfate Precipitation followed by Antigen Affinity Chromatography using the immunizing peptide
Conjugation:	Unconjugated
Storage:	Store undiluted at 2-8°C for one month or (in aliquots) at -20°C for longer. Avoid repeated freezing and thawing.
Stability:	Shelf life: one year from despatch.
Gene Name:	cripto, FRL-1, cryptic family 1

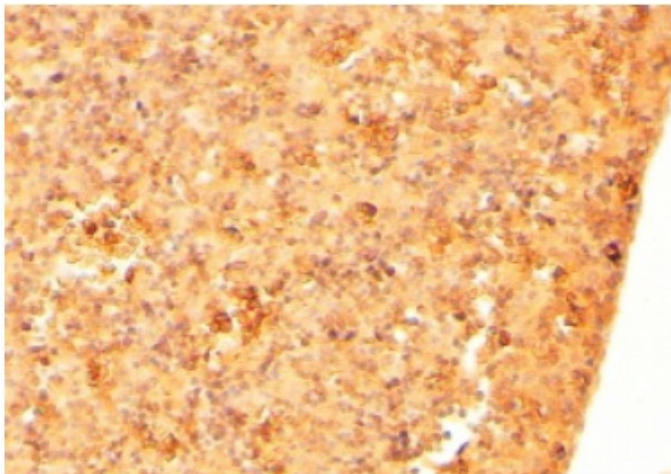


[View online »](#)

Database Link: [Entrez Gene 55997 Human](#)
[P0CG37](#)

Synonyms: CFC1

Product images:



Staining of paraffin embedded Mouse Embryo Liver using CFC1 Antibody at 2 ug/ml. Steamed antigen retrieval with citrate buffer pH 6, HRP-staining.