

Product datasheet for **AP32853PU-N**

SLAMF8 Goat Polyclonal Antibody

Product data:

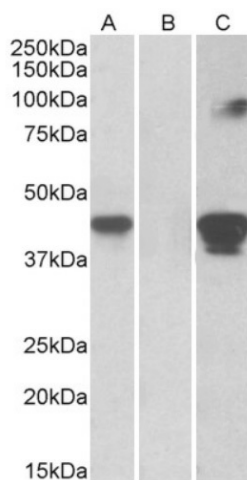
Product Type:	Primary Antibodies
Applications:	ELISA, IHC, WB
Recommended Dilution:	Peptide ELISA: 1/8000 (Detection Limit). Western blot: 0.5-1 µg/ml. In transfected HEK293 transiently expressing Human SLAMF8 (myc and DYKDDDDK tagged), a band of approx. 45kDa is observed. No bands are observed in mock-transfected HEK293 and the same band is observed using anti-myc antibody. Immunohistochemistry on Paraffin Sections: 5 µg/ml. Paraffin embedded Human Small Intestine.
Reactivity:	Bovine, Human, Mouse, Rat
Host:	Goat
Clonality:	Polyclonal
Immunogen:	Peptide with sequence C-TLYHSRFLGRAQ, from the internal region of the protein sequence according to NP_064510.1.
Specificity:	This antibody recognizes SLAMF8.
Formulation:	Tris saline, pH~7.3 State: Aff - Purified State: Liquid purified IgG fraction Stabilizer: 0.5% BSA Preservative: 0.02% Sodium Azide
Concentration:	lot specific
Purification:	Ammonium Sulphate precipitation followed by Antigen Affinity Chromatography using the immunizing peptide
Conjugation:	Unconjugated
Storage:	Store undiluted at 2-8°C for one month or (in aliquots) at -20°C for longer. Avoid repeated freezing and thawing.
Stability:	Shelf life: one year from despatch.
Gene Name:	SLAM family member 8
Database Link:	Entrez Gene 56833 Human Q9P0V8



[View online »](#)

Synonyms: BLAME

Product images:



HEK293 lysate (10ug protein in RIPA buffer) overexpressing Human SLAMF8 with C-terminal MYC tag probed with (1ug/ml) in Lane A and probed with anti-MYC Tag (1/1000) in lane C. Mock-transfected HEK293 probed with (1ug/ml) in Lane B. Primary incubations were for 1 hour. Detected by chemiluminescence.