

## Product datasheet for **AP32840PU-N**

### mGluR1a / GRM1a Chicken Polyclonal Antibody

#### Product data:

Product Type:	Primary Antibodies
Applications:	IF, IHC
Recommended Dilution:	<b>Quality Control:</b> This anti-peptide antibody mixture was validated by Immunohistochemistry (at 1/2000 dilution) using Fluorescein Conjugated Affinity-purified Goat anti-Chicken IgY antibody (Cat.-No AP31795FCN, 1/5000 dilution) as a secondary antibody. <i>Recommended Dilutions:</i> 1/1000-1/2000 for Immunohistochemistry and Immunocytochemistry using 2% paraformaldehyde-fixed tissues or cells.
Reactivity:	Human, Mouse
Host:	Chicken
Isotype:	IgY
Clonality:	Polyclonal
Immunogen:	Chickens were immunized with three synthetic peptide / keyhole limpet hemocyanin (KLH) conjugates. <b>Production:</b> These synthetic peptides corresponded to different regions of the metabotropic glutamate receptor type 1 gene product, but are shared between the human (NP_000829.2, NCBI) and mouse (NP_058672.1, NCBI) sequences. After repeated injections, immune eggs were collected, and the IgY fractions were purified from the yolks. These IgY fractions were then affinity-purified using a peptide column, and the concentrations of the eluates adjusted to 0.3 mg/ml. Finally, equal volumes of these affinity-purified anti-peptide antibodies were mixed, and the preparation was filter-sterilized.
Formulation:	PBS, pH 7.2 State: Purified State: Liquid purified IgY fraction Preservative: 0.02% Sodium Azide
Concentration:	lot specific
Purification:	Affinity Chromatography
Conjugation:	Unconjugated
Storage:	Store undiluted at 2-8°C. This product is photosensitive and should be protected from light.
Stability:	Shelf life: one year from despatch.



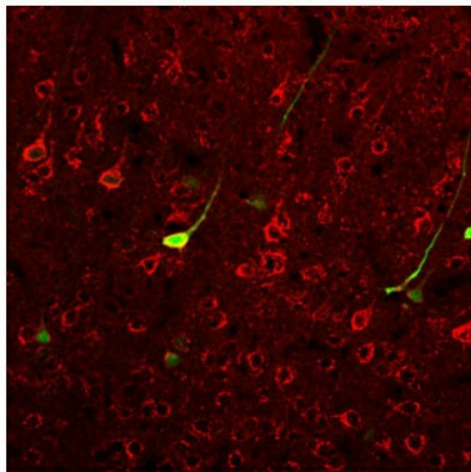
[View online »](#)

Gene Name: glutamate metabotropic receptor 1

Database Link: [Entrez Gene 2911 Human](#)  
[Q13255](#)

Synonyms: Metabotropic glutamate receptor 1, Gprc1a, Mglur1

**Product images:**



mGluR1 staining of cortical neurons in an adult transgenic mouse brain (red staining). Green staining is GFP-immunoreactivity for a subpopulation of cortical neurons.